

You've got

BUCKLEY'S

INFORMATION

GUIDE

2024



Where to eat and what to do in the
Alpine and Indigo Shires of North East Victoria



Believe in the Magic



NOW IN 2 LOCATIONS
6 & 10 Barnard Street, Brighton

Making
Spirits
BRIGHT

believe

Where the Christmas Season
Lives All Year

OPEN 7 DAYS

www.makingspiritsbright.com.au

Artwork by www.storyart.com.au



VOTED VICTORIA'S #3
 BREWERY VENUE
 + AUSTRALIA'S #8
 BEST BREWERY

BRIGHT BREWERY

MOUNTAINCRAFTED



**THIRSTY AFTER A
 DAY OF ADVENTURE?
 WE CAN HELP WITH THAT!**

**JOIN US TO EXPERIENCE
 BRIGHT'S BIGGEST- AND
 BEST - RIVERSIDE
 BEER GARDEN!**

VICTORIA'S BEST
 INDIE LAGER!



**OPEN 7 DAYS | 11.30AM-LATE
 121 GREAT ALPINE ROAD, BRIGHT**

Welcome to Buckley's Guide

You are now in one of the jewels of Victoria's rural crown. Please enjoy the relaxed ambience as you dine, shop and explore our breathtaking alpine views, historic towns, broad river plains and sweeping rural landscapes. As each season has its own special character, there is always a reason to be here.

Buckley's Guide is an annual publication focusing on information to help you enjoy every minute of your stay. Activities, wineries, brewers, distillers, restaurants, cafes, kids playgrounds, amazing shops and great services are at hand, and we encourage you to fully experience what is on offer. party, play or just relax!

Should you wish to view or download the guide on-line please visit buckleysguide.com.au or scan the QR code on this page. Should you wish to be a part of Buckley's Guide next year, please contact the team on 0421 882 514

All pages are hyperlinked to advertisers' websites should you require further information..if you click on an index number shown, you will go directly to that business. This year we are adding all your information pages to the Buckleys Guide website and are working on an app for the area too. The Guide will be out for the year just prior to Christmas and always welcomed by accommodation owners through the shires

Thanks for travelling along with us while we grow before your very eyes.

The Buckley's Guide team



HOUSE COPY

Please leave in the room for others to enjoy. You can download or view the guide on our website www.buckleysguide.com.au

PLEASE NOTE

This Guide is to remain in this room for your use and that of future guests. If you wish to purchase a souvenir copy, please see details above. Thank you and we trust that you enjoy your stay.



Graphic design:
Nina Petrie
Delivery – Ray Carlson
Email: buckleysguide@gmail.com
www.buckleysguide.com.au

Copyright: all rights reserved
PO Box 433 BRIGHT VICTORIA 3741
PH .0421 882 514



ADD WATER
GRAPHIC DESIGN

Nina Petrie
e: addwatergraphics@gmail.com
www.addwatergraphics.com.au
ph: 0421 882 514

- websites • flyers • brochures •
- magazines/e-zines •
- books • e-newsletters •
- marketing and communication
- social media • film conversion •
- memories on devices •

M | M

MAN | MERRILEES
Creativity in Print

DESIGN | PRINT | SIGNAGE



2 Ardern Place Wodonga Vic 3690
e: mickmerrilees@gmail.com m: 0409 472 638

BUCKLEY'S

TOURING GUIDE

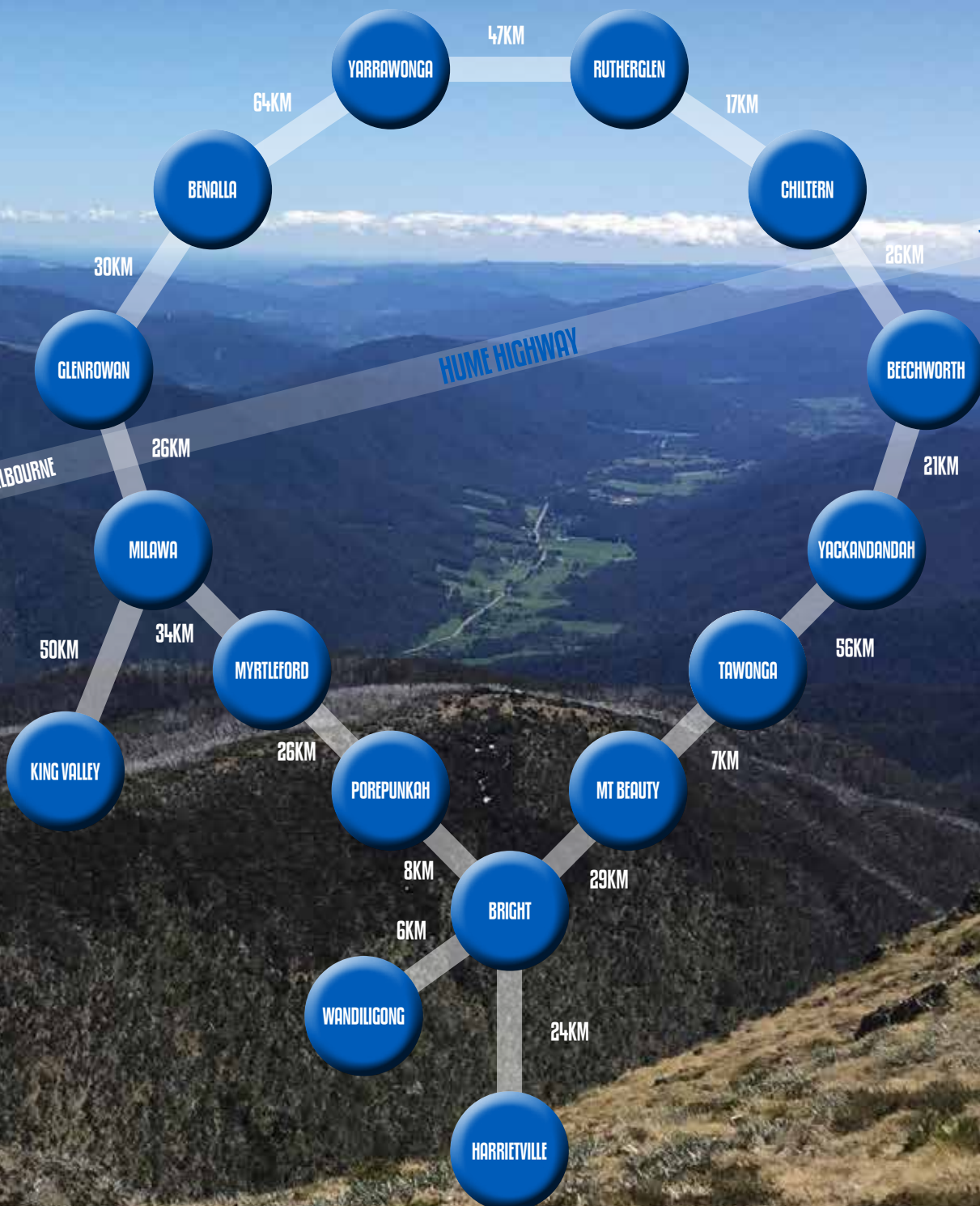
Our region is the perfect place to spend time touring either by car, bike or caravan. Nestled in the foothills of the Victorian Alps we boast some of the best scenery in Australia.

Then there's the added bonus of quality, locally grown, fresh produce and wine.

Top that off with first class restaurants and cafes, boutique breweries, tourist attractions, activities galore, great shopping and you won't be bored for a minute.

Spend a day, a weekend or weeks meandering your way through spectacular countryside.

You will be so glad you did.



Index

IFC	Making Spirits Bright	Bright
	<i>all kinds of Christmas shop</i>	
1	Making Spirits Bright	Bright
	<i>all kinds of Christmas shop</i>	
2	Bright Brewery	Bright
	<i>mountain crafted beers, fine food</i>	
3	Welcome to Buckleys Guide	
4	Regional Map	
5	Specialised Shops Index	
6	Bright, Wandiligong, Harrietville & Surrounds	

7	Services Index	
7	Restaurants & Cafés index	
8	King Valley, Milawa and Glenrowan	
9	Mt Beauty & Tawonga	
10	Myrtleford & Porepunkah	
11	Activities Index	
11	Wineries & Breweries Index	
12	Beechworth & Yackandandah	
13	Chiltern & Rutherglen	

Specialised Shops

14	Tutto Bello	Rutherglen	26	Sew Bright Alpine Quilting	Bright
	<i>exclusive clothing, silk, wool, leather, jewellery</i>			<i>everything you need to quilt</i>	
16	Milawa Pharmacy	Milawa	26	Country Collectables	Bright
	<i>professional service 7 days a week</i>			<i>souvenirs, gifts, kitchenware</i>	
16	Myrt' Op Shop	Myrtleford	27	The Olive Shop	Milawa
	<i>nothing over \$20</i>			<i>hampers, wine, gourmet</i>	
17	Quercus Community Bookshop	Beechworth	27	King Valley Wine Cellars	Milawa
	<i>read with the best</i>			<i>Wine both online and store</i>	
17	Alpine Armour	Porepunkah	27	Bright Boutique	Bright
	<i>design your own clothing</i>			<i>classy homewares</i>	
18	Gather & Harvest	Mt Beauty	28	Be Someone's Rock	Bright
	<i>candles, soaps, lip balms, bath bombs</i>			<i>Crystals - Gifts - Well-Being</i>	
18	Daisy Cow	Rutherglen	29	Bang	Bright
	<i>handcrafted soap and skincare</i>			<i>toys, games, educational gifts</i>	
19	Old Garage	Yackandandah	30	Sassy Road	Tawonga South
	<i>amazing collectables, old wares</i>			<i>trendy fashions & accessories</i>	
19	Beechworth Books	Beechworth	31	Victoria Lily	Bright
	<i>Cosy haven for book lovers</i>			<i>beautiful, affordable, jewellery</i>	
20	Catani Clothing	Bright	32	Gallery 90	Bright
	<i>fashion for the whole family</i>			<i>fabulous gifts, accessories, homewares</i>	
21	Arizona Western	Bright	33	Alpine Light Gallery	Bright
	<i>country and western paradise</i>			<i>professional photography with a difference</i>	
21	Brightsyde	Bright	34	Lisa Bishop	Chiltern
	<i>skateboards, accessories, clothing</i>			<i>quirky gifts & art</i>	
22	Beechworth Toys	Beechworth	34	The Finer Things of Life & Merchant	Beechworth Rutherglen
	<i>games, puzzles, collectables</i>			<i>elegant new & vintage gifts & jewellery</i>	
23	Beechworth Sweet Company	Beechworth	35	Tartan Fox	Bright
	<i>For those with a sweet tooth</i>			<i>fashion, footwear, accessories</i>	
23	Yack Community Op-Shop	Yackandandah	36	Tawonga South Butchery	Tawonga
	<i>quality items, hand-picked</i>			<i>quality local meat & produce</i>	
24	Vivienne Cate	Yackandandah	36	Whipps Designs	Mt Beauty
	<i>cowhides, fashion, gifts, homewares</i>			<i>fabulous custom-made fire-pits</i>	
25	7th Pocket	Yackandandah	37	Myrtleford Gallery	Myrtleford
	<i>aussie designers, eclectic gift range</i>			<i>paintings, sculpture, studio glass</i>	
25	Feather & Drum	Yackandandah			
	<i>custom made hats, accessories, gifts</i>				

BRIGHT, WANDILIGONG, HARRIETVILLE & SURROUNDS

In 1824, Hamilton Hume and William Hovell conducted an exploration of the area, and they gave the Ovens River its name. Initially, the town was called Morse's Creek in honor of F.H. Morse. However, in 1861, it was renamed Bright, paying tribute to the renowned British orator and politician John Bright. The town's Post Office was established on January 25, 1860, under the name Morse's Creek and later renamed Bright in 1866. Bright boasts a rich cultural heritage, and many places within the town, including its street names, can be linked to current residents. The Bright Historical Society holds extensive records documenting the region's history.



The town is in close proximity to the Victorian Alps and several alpine national parks, including Mount Buffalo National Park. Additionally, Mount Feathertop, Mount Bogong, and Mount Hotham are all situated near the town. Mount Bogong, towering at 1986 meters above sea level, holds the distinction of being the highest peak in the state of Victoria, while Mount Feathertop, at 1922 meters, is the second-highest.

Bright experiences a vibrant and lush autumn season, characterized by colorful foliage and cool days, along with chilly nights. The main industry of the town is tourism, with much focus on the autumnal colours of the European trees planted in the area. A major cultural event is the Bright Autumn Festival.

Wandiligong

Wandiligong was established in the 1850s during the Victorian gold rush and at one stage the town was home to 2,000 people. The town as a whole is now registered with the National Trust of Australia as a historic landscape and is home to buildings with historic value such as the Manchester Unity hall built in 1874. It is also home to one of the largest apple orchards in the southern hemisphere. These days, Wandil, as the locals call it, is a quiet enclave, however there are still plenty of things to do. The Diggings Walk with its Chinese Swing Bridge is a great way to discover the history of this magical little town.

Harrietville

The town's name, Harrietville, pays homage to the first white woman to reside there. Gold miners had already arrived by May 1860 and established a Prospecting Association. Harrietville's origins can be traced back to the Victorian Gold Rush, with the Post Office opening on July 5, 1865. Initially, alluvial gold was the primary target with most of the early miners being of Chinese descent. A large dredge known as the Tronoh Monster operated in the area, extracting alluvial gold from the Ovens River flats. The most renowned among these is the Tronoh Dredge Hole, which has become a popular location for swimming, fishing, cycling, and walking.



FLORA, FAUNA AND ADVENTURE

The local area is abundant with a diverse array of flora and fauna. One can observe numerous wildflowers, both large and small trees, undergrowth, and ferns. You can encounter platypuses, fish, yabbies, and amphibians thriving in their natural habitat a short walk from urban areas. Overhead, dragonflies, harmless native bees, and a variety of bird species, including willy wagtails,

kookaburras, magpies, and cockatoos, are often heard and seen in the vicinity and you can hear the enchanting calls of lyrebirds, spot wombats, and occasionally come across echidnas. The area also hosts several species of mostly small reptiles, such as lizards, and goannas can be spotted on one of the numerous nearby wooded bushwalking trails.

For those seeking adventure, hang-gliding and paragliding are popular activities. Fishing enthusiasts can cast their lines in the local rivers and dams, which are stocked with trout and Murray Cod. Mountain biking enthusiasts will find a variety of trails near the town center, ranging from technical and fast single tracks to leisurely rides along the river.

Services

38	Bright Laundry	Bright
	<i>supporting local community</i>	
39	Travel'n'Cruise	Wangaratta
	<i>personalised travel service</i>	
39	Mood & Realm	Regional
	<i>mbile massage & more</i>	
40	Beautiful in Bright	Bright
	<i>hair for everyone</i>	
40	Bright Upholstery	Bright
	<i>Domestic, commercial, auto</i>	
41	Tom's Rural Tree Services	Regional
	<i>all things trees</i>	
41	The Little Chop Shop	Bright
	<i>gents' barber</i>	
42	Nail & Beauty FX	Myrtleford
	<i>pedicures, beauty</i>	
43	Dickens Real Estate	Bright
	<i>sales, property management</i>	
44	Lime Wedge Platters	Regional
	<i>delivered to your door</i>	
44	Alpine Concierge	Regional
	<i>hampers, equipment hire</i>	
45	Cheeky Bits	Bright
	<i>spa, hair, beauty, fashion</i>	
46	Half Moon Creek	Wandiligong
	<i>weddings, events, parties</i>	

Restaurants & Cafés

47	Elm Dining	Bright	62	Heiners Bakery	Myrtleford
	<i>refurbished restaurant & bistro</i>			<i>traditional sweet & savoury</i>	
47	The Yard	Bright	63	Club Savoy	Myrtleford
	<i>South American share plates</i>			<i>home-made and tradition meals</i>	
48	Lamb on Gavan	Bright	64	Roadhouse Oxley	Oxley
	<i>refurbished restaurant & bistro</i>			<i>Aussie & Indian takeaway</i>	
48	Woodfire Desire	Regional	65	Tu Vietnamese Street Food	Myrtleford
	<i>parties, events, weddings</i>			<i>Vietnamese street food</i>	
49	Happy Valley Hotel	Ovens	66	Alpine Hotel	Bright
	<i>quality dining</i>			<i>refurbished restaurant & bistro</i>	
50	Moments & Memories Tea Rooms	Beechworth	67	Punkah Pantry	Porepunkah
	<i>High tea is special here</i>			<i>licenced café and provedore</i>	
51	Lilli Pilli Larder & Cafe	Mount Beauty	68	Roadhouse Bright	Bright
	<i>home-baked, alfresco, take-away</i>			<i>Aussie & Indian takeaway</i>	
52	Snowline Hotel	Harrietville	69	Cherry Walk Café	Bright
	<i>outside deck, fire, live music</i>			<i>refurbished restaurant & bistro</i>	
53	Henley's Wine Bar & Kitchen	Milawa	70	Suganya's Thai Restaurant	Bright
	<i>cellar door, gourmet food</i>			<i>dine-in & takeaway</i>	
54	The Riverdeck Kitchen	Bright	71	The Watchbox	Indigo Valley
	<i>licensed, family friendly</i>			<i>wood-fired pizza, wine, craft beer</i>	
55	Bastoni Pizzeria	Myrtleford	72	Il Centro Pizza	Bright
	<i>wood fired pizza, wine bar</i>			<i>ph. Orders, dine-in or take-away</i>	
56	Visit Eldorado	Eldorado	73	The Buffalo Hotel	Myrtleford
	<i>museum, dredge, pottery</i>			<i>dine-in or take-away</i>	
57	McEvoy Tavern	Eldorado	73	Mt Beauty Take-out	Mount Beauty
	<i>smallest pub in Victoria</i>			<i>gourmet burgers, fish & chips</i>	
58	Roadhouse Porepunkah	Porepunkah	74	Katsu Japanese Restaurant	Bright
	<i>Aussie & Indian takeaway</i>			<i>refurbished restaurant & bistro</i>	
59	Café Chulo	Myrtleford	74	Sole e Luna	Bright
	<i>fusion of Nepalese & modern cuisine</i>			<i>Italian restaurant, takeaway, dine-in</i>	
60	Coffee Staines	Beechworth	75	Everton Hotel	Everton
	<i>carvery & take-away</i>			<i>dine in with great atmospere</i>	
61	Pepperberry Restaurant	Bright	75	The Plough Inn	Tarrawingee
	<i>hatted restaurant serving local produce</i>			<i>country pub menu</i>	

KING VALLEY, MILAWA & GLENROWAN



King Valley

The King Valley, alternatively known as the King River Valley, is an agricultural and wine-producing region situated around the King River, spanning from Wangaratta to the Alpine National Park in the North East Victoria area of the Australian state of Victoria. Within this region, you can find several small towns, including Cheshunt, Whitfield, King Valley, Edi, Claremont, Moyhu, Byrne, Docker, and Oxley. The name "King Valley" received protection as an Australian Geographical Indication on October 12, 2007.

For over a century, the fertile valley has been utilized for diverse agricultural purposes. This has encompassed the cultivation of various crops such as hops and tobacco, in addition to dairy and beef cattle production. In 1889, a narrow-gauge railway was constructed between Wangaratta and Whitfield, while a government tobacco research farm was established in Edi, later moving to Whitfield in 1902. After World War II, a significant influx of Italian, Yugoslav, and Spanish migrants settled in the area, where they initially established tobacco farms. Following the eventual decline and demise of the tobacco industry in the mid-1980s due to government deregulation in 2006, local farmers diversified into other crops, including chestnuts, hops, berries, and the establishment of numerous vineyards.

The King Valley earned recognition as a wine region specializing in varieties such as sangiovese, nebbiolo, and barbera, among others. Notably, the region hosts some of Australia's highest altitude vineyards, with some located around 800 meters (2,600 feet) on the Whitlands Plateau.

Milawa

Milawa is a charming town situated in Victoria, Australia, and it can be found along Snow Road, approximately 18 kilometers (11 miles) to the southeast of Wangaratta, within the Rural City of Wangaratta. As of the 2021 census, Milawa had a population of 588.

This town is nestled at the northern end of the King Valley wine region, situated between the King River to the west and the Ovens River to the north, where they converge in Wangaratta. Milawa serves as the central hub for the Milawa Gourmet Region, known for its diverse offerings of high-quality produce.

The name "Milawa" was adopted in 1873, following years during which the town was known simply as "The Square." The word "Milawa" has Aboriginal origins, being a combination of "Mila," signifying "Eyes," and "Wah/Wa," which denotes "water." The Bpangerang people in the Milawa area were known as the "water watchers" who vigilantly observed the two main rivers, the King River (referred to as the Poodumbia) and the Ovens (known as the Torryong).

In the early days, the Emu Hotel occupied one corner (established by James Henley), while the Commercial was situated on the opposite corner (constructed by Colin Gardner). The town boasted general merchandise at McKenzie's store, along with various craftsmen, including blacksmiths, a saddler, a bootmaker, a carpenter, and a doctor, Dr. McSweeney. The Post Office opened on July 7, 1862, initially as Oxley, and later as Oxley Plains until 1874.

Glenrowan

Glenrowan is a town situated within the Wangaratta local government area in Victoria, Australia. It is located 236 kilometers to the northeast of Melbourne, 14 kilometers from Wangaratta, and is in proximity to the Warby Ranges and Mount Glenrowan. As per the 2021 census, Glenrowan was home to a population of 1,049.

The town's name, Glenrowan, derives from farmers James and George Rowan, who worked on farms in the area from 1846 to 1858. Glenrowan itself was established in the late 1860s, with the Post Office opening on February 22, 1870. The town is particularly renowned for its association with the infamous bushranger Ned Kelly, who made his last stand and was ultimately captured there in 1880 after a siege and a shootout with the police.

A local railway station was inaugurated in 1874 but ceased passenger services in 1981. Additionally, the town lends its name to the Glenrowan wine region, officially defined in 2003, with the first grapevines planted in 1866.



MT BEAUTY & TAWONGA



Mt Beauty

Mount Beauty is a quaint town in northeastern Victoria, Australia. Nestled alongside the Kiewa River, it occupies the crossroads of the Kiewa Valley Highway and Bogong High Plains Road within the Alpine Shire local government area.

The town's origins can be traced back to its establishment by the State Electricity Commission of Victoria in 1949, primarily to accommodate construction workers employed in the Kiewa Hydroelectric Scheme. Control of the town transitioned to the local shire council in 1967 following the scheme's completion. Post offices opened at Tawonga South (located to the north) on April 15, 1943, and at Mount Beauty on February 17, 1947. Additionally, during the years 1949-1953, there were post offices known as No 2 Camp, No 4 Camp, and No 5 Camp, Mount Beauty.

Mount Beauty experiences a distinct seasonal climate. It features cold winters, damp springs, warm summers with clear blue skies, and vibrant autumns. Each season offers its unique attractions, including skiing, bushwalking, horse riding, gliding, mountain and road biking, as well as fishing in the river and lakes. The town hosts an annual music festival, a mountain bike competition, and regular weekend markets on the first Saturday of each month. For adventure seekers, there are numerous four-wheel drive tracks in the vicinity.

Mount Beauty serves as a gateway for excursions to the Falls Creek ski resort and the Bogong High Plains. To facilitate this, you'll find several ski rental shops, dining establishments, and a bus company offering daily trips to and from Falls Creek, which is located 32 kilometers away.

The town's picturesque location offers stunning views of the surrounding mountains, including Mount Bogong and various peaks that pique the interest of many visiting tourists.

Tawonga

Situated in the Kiewa Valley, within North East Victoria, and just a brief drive from Mount Beauty, lies the charming township of Tawonga. This area has been inhabited by indigenous peoples for countless centuries, and the name "Tawonga" itself signifies 'flight through the air.' Additionally, the Kiewa River, which gracefully meanders through the region, aptly translates to 'sweet water,' adding to the natural allure of the place. The river, with its refreshing coolness, is truly remarkable!

Tawonga's picturesque landscape is marked by vast open skies and commanding vistas of Mount Bogong and Mount Emu. Nearly every corner of this location capitalizes on the breathtaking mountain panoramas.

As the oldest settlement in the Kiewa Valley, Tawonga was initially recognized for its lush pastures, and in 1841, the Tawonga pastoral run was under the ownership of James Roberts. By the 1870s, it had been divided into plots for agricultural and residential development.

Tawonga proudly offers essential amenities, including its own general store, a public primary school, and a Town Hall, which was inaugurated back in 1880. In addition, the township features a motel, a ski hire shop, and a selection of restaurants. Its strategic location allows for a quick 5-7 minute drive or a pleasant bike ride to nearby Tawonga South and Mount Beauty, providing ample opportunities to explore the surrounding area.

Tawonga exhibits a diverse range of properties, ranging from those along the highway to those nestled into the hills. Many of these residences enjoy sweeping mountain views and overlook the adjacent farmland.



MYRTLEFORD & POREPUNKAH



Myrtleford, nestled in the northeastern region of Victoria, Australia, is situated 282 km (175 miles) to the northeast of Melbourne and 47 km (29 miles) to the southeast of Wangaratta. This charming town falls under the jurisdiction of the Alpine Shire local government area, and as of 2021, it had a population of 3,285.

The town's post office was established on 26 July 1858, originally named Myrtle Creek, and it later adopted the name Myrtleford in 1871. The thoroughfare that traverses Myrtleford was once known as Buckland Road and Ovens Hwy, but today it is recognized as the Great Alpine Road.

This serene town nestled in the heart of Victoria's alpine wine region serves as an ideal starting point for exploring the myriad of wineries, mountains, valleys, and savoring some of the state's finest cuisine.

Among the many attractions of Myrtleford, one of the standout features is its thriving arts and cultural scene, seamlessly integrated with its love for the outdoors. A leisurely stroll along the main street will introduce you to art galleries, vibrant cafes, charming boutiques, and an abundance of scenic walking trails.

Myrtleford serves as a gateway to the breathtaking natural landscapes of the region. Nearby areas like Mt Buffalo National Park provide easy access to the great outdoors, with an array of hiking trails, mountain biking routes, and scenic drives that offer captivating views of the rugged terrain.

Myrtleford is a destination that caters to a diverse range of interests, welcoming history enthusiasts, culture seekers, wine connoisseurs, and nature lovers alike. With its unique blend of heritage, culture, and natural splendor, Myrtleford has rightfully earned its place as one of Victoria's most cherished towns.

Porepunkah began to develop when European settlement commenced in the 1830s, yet it wasn't until the 1850s gold rush that Notably, Porepunkah is the closest modern town to the location of the Buckland Riot, an anti-Chinese race riot that unfolded on July 4, 1857.

The infamous bushranger Harry Power defied law enforcement for a decade in the Ovens district. After escaping from Pentridge Prison, he held up the mail coach at Porepunkah on May 7, 1869.

The historical thread continues with the establishment of Porepunkah's Post Office on February 22, 1870. While the original Post Office no longer stands, the Porepunkah Roadhouse now serves the community with Australia Post services due to the absence of mail delivery to homes.

On January 23, 1873, Porepunkah Primary School (No. 1144) officially opened its doors, with Henry Jeffreys serving as the headmaster and an initial enrolment of 43 children. Remarkably, this school continues to educate children to this day.

In 1895, the Porepunkah Recreation Reserve was officially designated, and on June 22, 1910, Lord Carmichael, the Governor of Victoria, proclaimed Porepunkah as a township.

The Porepunkah railway station, which opened in 1890 as part of the Bright railway line, closed its doors in 1983. However, the disused railway corridor was transformed into the popular Murray to the Mountains Rail Trail, offering a scenic path for cycling and hiking that passes through Porepunkah.

Activities

76	Bright Electric Bikes	Bright		88	Adventure Guides Australia	Beechworth	
	<i>tours & sales</i>				<i>family friendly adventures</i>		
77	Active Flight Paragliding	Bright		88	Mt Buffalo Ski School	Beechworth	
	<i>glide with an aussie champion</i>				<i>learn from the best</i>		
78	Asylum Ghost Tours	Beechworth		89	Jim Jam Foods & Cafe	Stanley	
	<i>history & ghost tours</i>				<i>tasting & hampers</i>		
78	Mayday Escape Rooms	Beechworth		90	Bright Markets	Bright	
	<i>challenging, test your wits</i>				<i>make it, bake it, grow it,</i>		
79	Pepo Farms	Ovens		91	Service Course Bicycle Studio	Porepunkah	
	<i>gourmet seeds, oils, artisan mill</i>				<i>service, hire & sales</i>		
80	Snow Dog Transport	Regional		92	Red Stag Deer & Emu Farm	Eurobin	
	<i>tours, transfers, pick-ups</i>				<i>restaurant, mini-golf, pets</i>		
80	Pure High Country	Dinner Plain		93	Sun Cinema	Bright	
	<i>high-country village, open all year</i>				<i>new releases, lounge seating</i>		
81	Adventure Guides Australia	Bright		94	Happy Valley Hub	Ovens	
	<i>caving, abseiling, canoeing</i>				<i>ski hire & sales</i>		
82	Hi Life Helicopters	Porepunkah		94	Bright Outdoor Centre	Bright	
	<i>scenic flights, charter</i>				<i>camping, fishing, hiking</i>		
82	Bright & District Leisure Tours	Bright		95	Nightingales Bros. Prod Store	Wandiligong	
	<i>transfers, tours, groups</i>				<i>orchard, produce store, local ciders</i>		
83	All Terrain Cycles	Bright		96	Explore Chiltern	Chiltern	
	<i>for all your biking needs</i>				<i>historic town, bike-riding, birds</i>		
84	Kiewa Valley Snow Sports	Tawonga Sth		96	Hillsborough Quality Nuts	Stanley	
	<i>hire & retail</i>				<i>gifts, treats, farm</i>		
85	Adventures 3741	Bright		97	Bright Mini Golf	Bright	
	<i>4WD, motorcycle, hiking, mountain bikes</i>				<i>18 hole course</i>		
86	Bright & Surrounds	Bright		106	Ned Kelly's Last Stand	Glenrowan	
	<i>local tips for visitors</i>				<i>re-enactment of Ned's shoot-out</i>		
86	Platypus Information	Regional		BC	Mountain Fresh Trout & Salmon Farm	Harrietteville	
	<i>survival information</i>				<i>catch your own or buy fresh caught</i>		
87	Kate's Cottage & Ned Kelly Museum	Glenrowan					
	<i>museum, gifts & souvenirs</i>						

Wineries & Breweries

98	Billsons Brewery	Beechworth	
	<i>bistro, beer garden, tastings</i>		
99	Schmidt's Strawberry Winery	Yackandandah	
	<i>tastings, strawberries</i>		
99	Reed & Co Distillery	Bright	
	<i>cocktail bar, tastings, sales</i>		
100	King River Estate Winery	King Valley	
	<i>wine, tastings, platters</i>		
101	Baileys of Glenrowan	Glenrowan	
	<i>organic, wood-fired pizza, wine</i>		
101	Glenbosch Wine Estate	Beechworth	
	<i>home-baked, alfresco, gin</i>		
102	Hurdle Creek Still	Milawa	
	<i>craft local gin</i>		
102	Crank Handle Brewery	Mt Beauty	
	<i>restaurant and craft beer</i>		
103	Wood Park Wines	Milawa	
	<i>daily tastings</i>		
104	Mountain Monk Brewers	Mt Beauty	
	<i>artisanal craft beer, local produce cuisine</i>		
105	Eaglerange Estate	Ovens	
	<i>boutique wine, scenic estate</i>		
2	Bright Brewery	Bright	
	<i>mountain crafted beers, fine food</i>		

BEECHWORTH & YACKANDANDAH



Beechworth is a remarkably well-preserved historical town nestled in the northeastern region of Victoria, Australia. It gained prominence during the mid-1850s gold rush, and as of the 2021 census, Beechworth had a population of 3,290.

The town boasts numerous impeccably preserved historical buildings, and over time, it has transformed itself into a sought-after tourist destination and a thriving center for wine production.

Beechworth Parish and Township plans were developed, named, and authorized by George D. Smythe. He undertook this task after departing from his family estate near Liverpool in 1828 and later in Launceston, Tasmania in 1838. Originally, the area, which had been utilized for grazing by the settler David Reid, was sometimes referred to as Mayday Hills until 1853.

The Post Office in Beechworth opened on May 1, 1853, under the name Spring Creek, and it was subsequently renamed Beechworth on January 1, 1854. The Indigenous name Baarmutha was also associated with the area, although its origin and language are unknown.

Between 1852 and 1857, Beechworth experienced a gold rush, becoming a significant gold-producing region and a center of government. However, its influence, wealth, and power were relatively short-lived. Notably, a group of early prospectors extracted a 14-pound (6.4 kg) pan of gold from the area, and another party managed to collect approximately 50 pounds (23 kg) of gold within a week. This led to a rush of people coming to the remote region. During the initial election campaign in 1855, one candidate, Daniel Cameron, rode a horse adorned with solid gold horseshoes. This extravagant event remains commemorated as the golden horseshoe serves as the symbol of Beechworth.

Yackandandah, known locally as “Yack”, is a quaint tourist town located in the northeastern region of Victoria, Australia. It is in proximity to the regional cities of Wodonga and Albury and is also near the popular tourist town of Beechworth. According to the 2021 census, Yackandandah had a population of 2,008.

Prior to European colonization, the indigenous people of the area were the Dhudhuroa people, and it is said that the name “Yackandandah” originates from their language, meaning “one boulder on top of another at the junction of two creeks,” specifically referring to the intersection of the Yackandandah and Commissioner creeks.

The area was first opened up to European settlement when James Osborne acquired land at Osborne’s Flat in 1844. Following the discovery of gold deposits in 1852, Yackandandah became a gold mining center known for its alluvial wet mining techniques. The Yackandandah Post Office was established on June 13, 1856. Another office, Yackandandah Junction, opened nearby in 1872 but ceased operations in 1885.

An old poem published in the Melbourne Punch on June 11, 1857, titled “The Lass of Yackandandah,” beautifully captures the charm of the area and its people. It reads:

*“Let poets sing of English girls,
Their beauty and their candor;
Give me a sweeter nymph than all, –
The lass of Yackandandah.”*
*“She draws a cork with such an air,
No mortal can withstand her;
She turns a tap, and turns our heads, –
The lass of Yackandandah.”*

**O’Brien,
The Lass of Yackandandah – a Goldfield Beauty**

CHILTERN AND RUTHERGLEN



Chiltern is a town in Victoria, Australia, nestled in the northeast of the state, lying between Wangaratta and Wodonga within the Shire of Indigo. As of the 2021 census, Chiltern boasted a population of 1,580. This town holds historical significance as the birthplace of Prime Minister John McEwan. It's also in proximity to the Chiltern-Mount Pilot National Park.

Chiltern was once a prominent stop on the main road connecting Melbourne and Sydney. However, it has now been bypassed by the Hume Freeway, which runs about one kilometer to the south.

The Chiltern region has a rich history as the traditional lands of the Dhudhuroa people. In the Chiltern-Mt Pilot National Park, the Yeddonba Aboriginal Cultural Site holds ancient artworks created by the area's original inhabitants, including an ochre painting believed to represent a Thylacine, an extinct animal that hasn't existed on mainland Australia for thousands of years.

The region that encompasses Chiltern was originally part of the Wahgunyah cattle run and was known as Black Dog Creek. The town, named after the Chiltern Hills in England, was officially surveyed in 1853 but was not established until gold discoveries were made in 1858-59, coinciding with the broader Victorian Gold Rush. The Post Office opened on September 1, 1859.

Notably, many of Chiltern's buildings are designated as heritage sites by the National Trust. During 1859, as a result of gold discoveries, numerous shopkeepers and miners from nearby Beechworth and the Ovens Valley regions migrated to Chiltern.

Chiltern hosts an antique fair in August and an art show in June. The Chiltern-Mount Pilot National Park is located in close proximity to the town. Golf enthusiasts can play at the Chiltern Golf Club situated on Howlong Road.

Chiltern has also been a backdrop for various film productions, taking advantage of its well-preserved Victorian-era streetscapes

Rutherglen, situated in northeastern Victoria, Australia, near the Murray River on the New South Wales border, derives its name from the Scottish town of Rutherglen, just outside Glasgow. As of the 2016 census, Rutherglen had a population of 2,109. The town is positioned to the north of Wangaratta and west of Wodonga, with a mere 10 kilometers from the Murray River at the border towns of Wahgunyah and Corowa.

Originally, Rutherglen was a gold-mining town in the mid-19th century. Over time, it has transformed into a significant wine-producing region, housing 17 wineries within a short drive from the town center. The main street of Rutherglen has retained its historical charm, with most shop fronts preserving their century-old appearance.

The town boasts attractions like Lake King, encompassed by Apex Park and Rutherglen Park, as well as the distinctive wine-bottle-shaped water tower located on Campbell Street. The Rutherglen Post Office commenced operations on November 1, 1860, while the Rutherglen Magistrates' Court ceased operations on January 1, 1990.

Rutherglen's wine region, centered around the town, is renowned for its sweet fortified wine styles, including Muscat, Topaque (formerly known as Tokay), and Port. The area's largest winery is the All Saints Winery, situated just a short drive northwest of Wahgunyah. Established in 1864, it features beautifully landscaped gardens, ponds, a restaurant, and wine tasting facilities.

Visitors can explore the Rutherglen Wine Experience Visitor Information Centre, located in the town center on Main Street. This center offers insights into the town's rich history, the winemaking process, and comprehensive tourist information.

TUTTO BELLO



all things beautiful

Linen, cotton, silk, fur, wool, leather bags, jewellery and accessories.
66 Main Street, Rutherglen Vic 2/525 David Street, Albury NSW 0439 365 741







MILAWA PHARMACY

1605B Snow Rd Milawa, Vic 03 5719 3701
milawapharmacy@gmail.com



Milawa Pharmacy offers a range of services to our customers. We are so much more than a pharmacy and can deliver to you if necessary.

Prescriptions

Price Beat Guarantee on all Prescription medications.

Workcover/TAC Claims

No need chasing up invoices. We will claim on your behalf so no out of pocket for you every time!

Pharmacist Advice

Forward dispensing model ensures you speak to a pharmacist every time you have a medication or health related question.

FREE Medication Packing!

Weekly medication packing into blister and sachet roll options! Free delivery to your home!

NDSS Agent

Diabetes NDSS Agent- Needles/Tester Strips/Lancet Supply

Medical Certificates

Pharmacist issues sick or carers leave certificates Fair Work approved.

Free Blood Pressure Testing

Pharmacist blood pressure testing and advice recorded on request for monitoring

Crutches Hire

Hire options for mobility aids

Practitioner Range Supplements

Bioceticals and Metagenics ranges dispensed by a qualified pharmacist

Home Medication Reviews

Comprehensive medication review initiated by your GP medicare covered

Vet Medications

Best prices on Vet prescriptions! Make sure you get a quote from us before filling your Vet scripts!

Metagenics Practitioner

Holistic care with Metagenics practitioner onsite

IVF Medication

Provision of specialised IVF drugs

Antiviral Therapy

Specialised medication for management of HIV and PreP

Home Medication Reviews

We can undertake medicare funded home medication reviews. If you are taking multiple medications or been recently discharged from hospital you may qualify for this service

Plus a huge range of giftware

*If you need us call 5719 3701
7 day a week service*



MYRT' OP SHOP

MON, TUE, THUR, FRI

10:00am - 3:00pm

WEDNESDAY

10:00am - 1:00pm

WEEKENDS

10:00am - 1:00pm

PUBLIC HOLIDAYS

10:00am - 1:00pm

P.A.C.S

Supporting P.A.C.S.
(Performing Arts
Community Support)

100% NOT FOR PROFIT

Nothing over \$20

4-10 Clyde St, Myrtleford VIC

0466 045 538





Community Book Shop

QUALITY SECOND
HAND BOOKS
PROCEEDS RETURNED TO COMMUNITY
VOLUNTEER STAFFED
OPEN 7 DAYS, 10AM-4PM
30 FORD STREET
BEECHWORTH
0403 865 095



Quercus Beechworth
Neighbourhood House



DESIGN
YOUR
OWN



COMMEMORATE YOUR ALPINE ADVENTURE

Design your own clothing by selecting a quality blank garment and choosing or creating a locally inspired design.



MYSTIC PARK BRIGHT MERCHANDISE

Get your Mystic Park Bright Merch from the people that make it. Commemorate your visit by customising your Mystic hoodie or t-shirt.

1/13 Nicholson Street, Porepunkah
Bailey Street side of the Punka Pub



GATHER + HARVEST

CONSCIOUS SELF-CARE
PRODUCTS FOR YOUR
HOME, BODY & SOUL

Escape to the heart of the high country and
discover our beautiful studio and retail store

Watch our expert artisans handcraft gorgeous
self-care goodies ready for you to take home to
nourish your body and soul

Visit us at 18A Hollonds St, Mount Beauty



www.gatherandharvest.com.au



Follow us on Instagram and Facebook @gatherandharvest

Daisy Cow

SOAP & SKINCARE

Our products are Australian made, offering you the 'healthy option' without the price tag. We use cow's milk in our soaps, hand and body washes. We only use pure essential oils - no synthetic fragrance - and organic cold-pressed extra virgin olive oil.

Daisy Cow products are free of petroleum, parabens, paraffin, chemicals, phthalates, sodium lauryl sulphate and other harmful ingredients. Nothing we make is tested on animals.



Tel: 0400 695 612 sales@daisycowsoap.com.au

Wednesday, Thursday, Friday 9am to 4pm · Saturday 9am to 5pm · Sunday 9am to 2pm

Closed Monday /Tuesday 18 ~

OLD GARAGE

OLD WARES & COLLECTABLES

YACKANDANDAH



Open: Friday to Tuesday
10am - 4pm



2/2 High Street Yackandandah

Phone: 0459 591 132

BEECHWORTH BOOKS



BEECHWORTH BOOKS



Beechworth Books beckons with open arms, embracing readers of every age and literary preference.

As an independent bookshop, Beechworth Books stands as a cherished retreat for book enthusiasts, whether they call our community home or are just passing through.

We extend a warm invitation for you to explore our shelves, where you'll discover a carefully curated and extensive selection of fiction and non-fiction to satisfy the reader's cravings. We also take pride in our collection designed to captivate the hearts of children and young bibliophiles.

Don't hesitate to request a personalized order; we're here to fulfill your literary desires.

At Beechworth Books, we celebrate the bond between bookworms and the enchantment of bookstores. A real shop serving the local community and welcoming visitors.



Hours: Monday to Friday: 10 am - 5 pm
Saturday & Sunday: 10 am - 4 pm
Email: beechworthbooks@bigpond.com
beechworthbooks.com.au

1/73 Ford St, Beechworth, Victoria, 3747 Tel: 03 5728 2880

Catani

CLOTHING



101 GAVAN ST, BRIGHT, VIC, 3741

OPEN 7 DAYS A WEEK

PH: 03 5755 2219



FASHION FOR THE WHOLE FAMILY





Arizona Western will look after your Western inspired clothing, boots, hats, bags, jewelry, and accessories. We, Greg and Christel, have been local to Bright for 11 years and both love Country and Western music, clothing and lifestyle and are very excited to offer this to Bright and surrounds.

We will bring some major Country and Western brands you know and love and will be adding more...

- Wrangler
- Pure Western
- Twisted X
- Bullzye
- Ariat
- Just Country,
- Kader Boot Co,
- Red Rock Hats



The Arizona Western team are excited about our revamped store. We will gladly serve you in our boutique or you can choose to order online.

Opening hours:

Mon-Fri 10 am to 5 pm,

Sat 10 am to 4 pm, Sun 10 am to 2 pm.

20A Ireland Street

BRIGHT VIC 3741

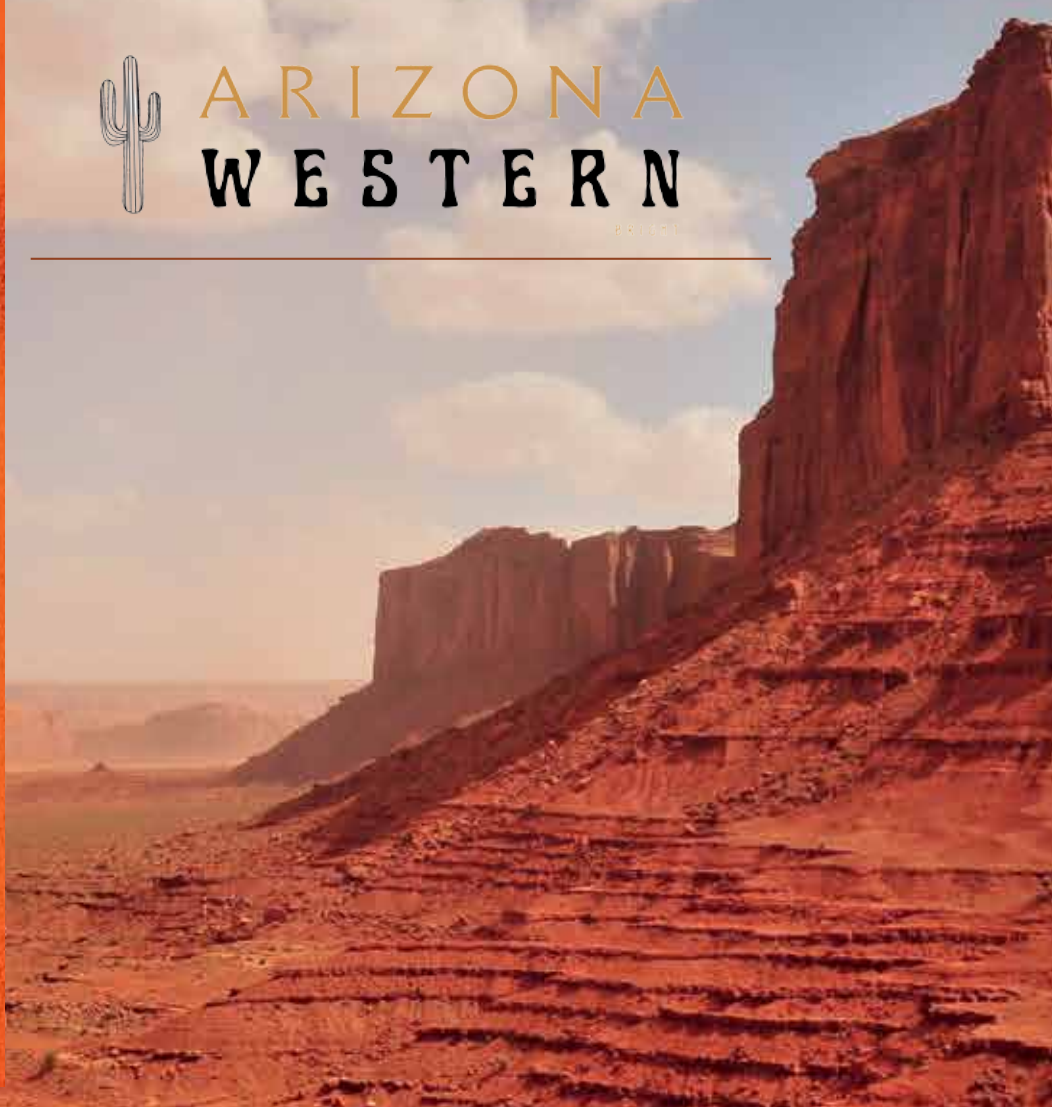
shop@arizonawestern.com.au

0479 158 491 0414 870 609



ARIZONA WESTERN

BRIGHT



PATAGONIA, NIKE SB, VANS, AFENDS, RUNNING BARE, KOLLAB, THRASHER & MORE

BR🌲GHTSYDE



Skateboards, Clothing & Accessories
for the whole family!

2 Star Rd, Bright - opposite Star Bar



BEECHWORTH TOYS

TOYS OF THE WORLD

& COLLECTABLES



- Games
- Timber toys
- Tin toys
- Jigsaws
- Art supplies
- The unusual

Seeing is believing

BRIO®

Steiff

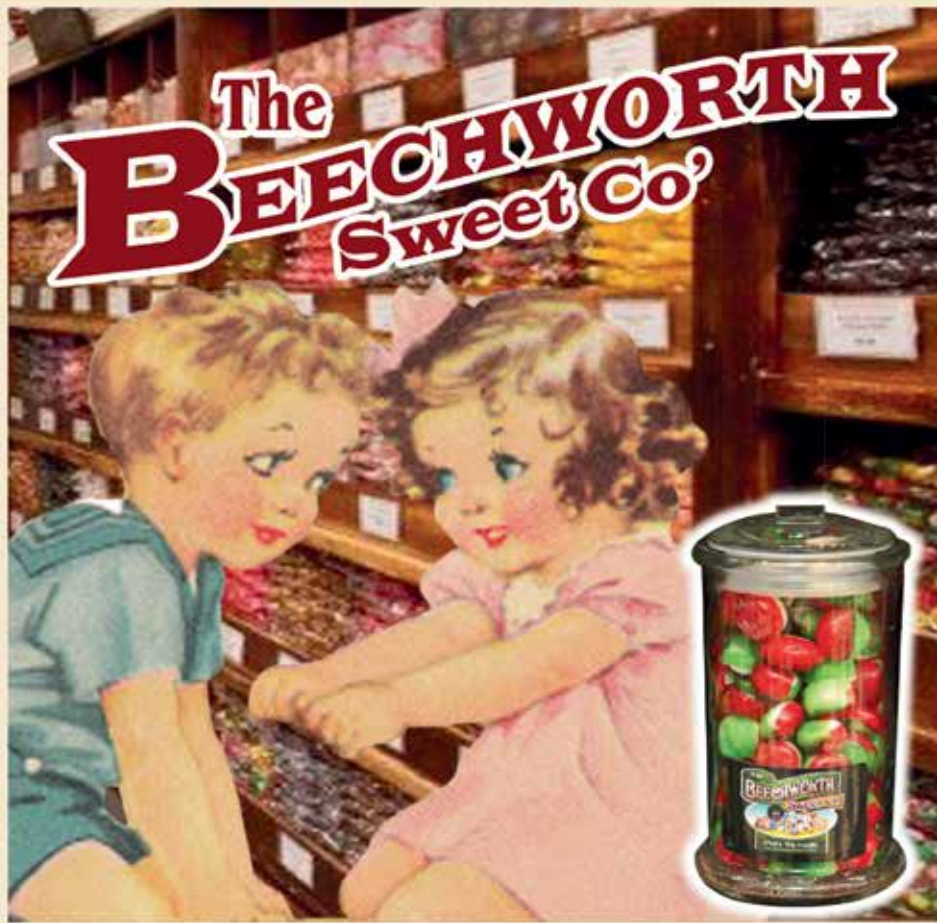
Christmas

Schleich®
Your World of Animals



51 Ford Street, Beechworth
03 5728 1117
www.beechworthtoys.com.au





OPEN EVERYDAY
(closed Christmas day)



taste the magic
experience the wonder

7 Camp Street Beechworth Vic Australia
www.beechworthsweetco.com.au
Ph: (03) 5728 2060



YACKANDANDAH COMMUNITY OP-SHOP



A great little Op Shop in the heart of picturesque Yackandandah. We have a fantastic selection of top-quality pre-owned clothes and homewares.

Drop in to find a bargain or to talk to one of our fantastic volunteers about what is happening in Yackandandah.



Opening hours:
10am-3pm Monday to Friday.
Open Saturday and Sunday most weekends
Address: 29 High Street Yackandandah
Phone: 02 6027 1743
Web: ycc.org.au



VIVIENNE CATE

LINEN, LEATHER & LUXURY



A unique curated collection, with a focus on
natural materials and handmade products



6 High Street, Yackandandah

Open 7 days 10am - 4pm

0448 389 731

www.vivienne cate.com

~ 24 ~





seventh pocket

LIFE & STYLE

Haven Of Antipodean Designers



Apparel

Thoughtful - Well made



Timeless

Beautiful gifts - Homewares



Beautiful Pieces

For life + Style + Living



7 High Street,
Yackandandah 3749 Vic
0488 993 644
www.seventh-pocket.com
Open 7 days

Keeping the art of traditional hatmaking alive!



FEATHER & DRUM

CUSTOM HAT CO.
EST. 2020

Specialising in custom made-to-order felt hats built on site. The Yack store has a limited number of ready-made hats to try and purchase and also offers a curated selection of accessories and giftwares.



3/2 High St, Yackandandah VIC
Open by appointment or chance.
Call to book a design and fitting appointment
Cat - 0438 202 565



WWW.FEATHERANDDRUM.COM

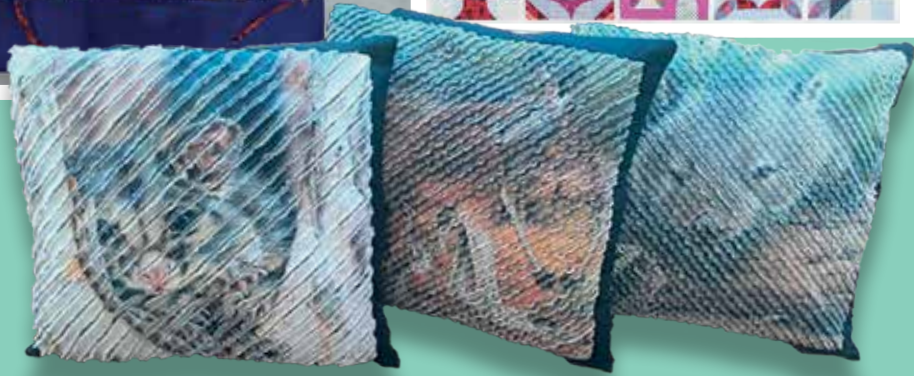
SEW BRIGHT ALPINE QUILTING

4 Ireland Street, Bright

Inspire | Create | Learn

Open Weekdays 10am-4pm – Weekends 10am-3pm

Closed Tuesdays



sewbright.com.au

THE

FABRIC STORE
FOR QUILTERS



Country Collectables

Souvenirs – Gifts – Kitchenware

Something For Everyone



Located in the heart of Beautiful Bright opposite the Clock Tower



Ph 03 5755 1335



24 Ireland Street Bright

www.countrycollectablesbright.com



Olive & Oil Tastings



THE OLIVE SHOP
- MILAWA -

Regional gourmet goodies for everyone



Wide selection of Gourmet Hampers or build your own!



Co-located at 1605 Snow Rd, Milawa VIC 3678 ph (03) 57273887

Open from 10am 7 days a week

www.theoliveshop.com.au



Fine wines from the King Valley and surrounding wine regions



Experience our wide range all in one convenient location.

Why not become a member of King Valley Wine Club
It's like being a member of more than 20 fabulous wineries - all rolled into one.



www.kingvalleywinecellars.com.au

Bright Boutique | HOMEWARES



125 GAVAN STREET, BRIGHT VIC 3741

OPEN 7 DAYS, 9AM-3PM

WWW.BRIGHTBOUTIQUEHOMEWARES.COM.AU





CRYSTALS, GIFTS,
WELL-BEING

*STORE
NOW OPEN*

RIVERSIDE WALK, BRIGHT

phone:

(03) 5755 1456

Web:

BESOMEONESROCK.COM.AU





BANG

Brights Activities Novelties & Games
Bright, Victoria Phone (03) 5750 1777



Open 10am - 5pm everyday.
12B Barnard Street, Bright

Quality Educational Games & Toys

The latest board games & card games

Traditional & Collectable Toys & Lego





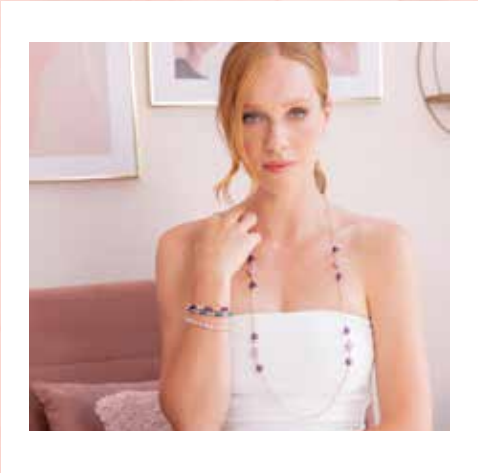
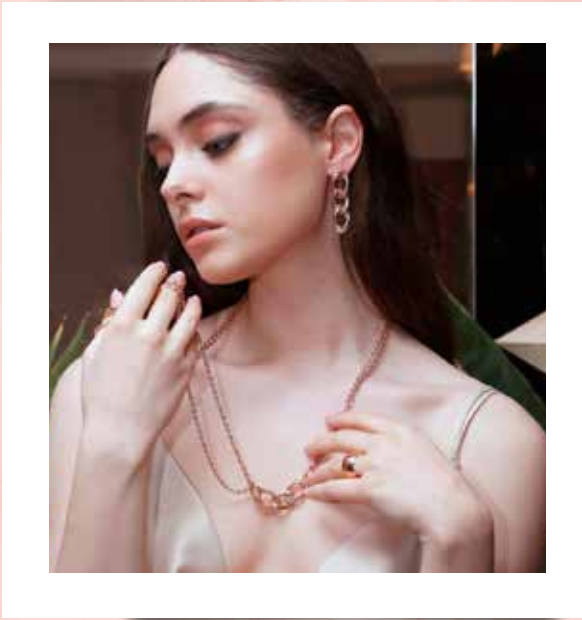
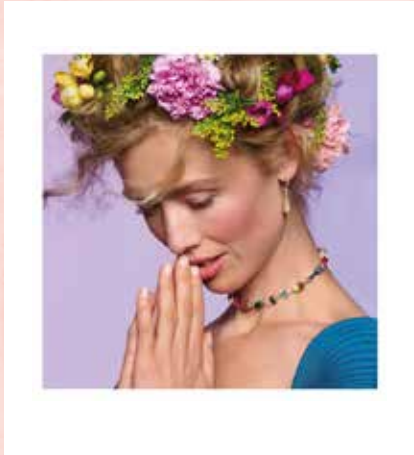
Sassy Road

2/215 KIEWA VALLEY HIGHWAY
TAWONGA SOUTH
MON-FRI: 10AM - 4.30PM
SAT: 10AM - 3PM
SASSYROAD.COM.AU





Victoria Lily



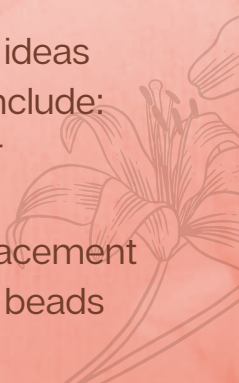
We offer a unique collection of jewellery and watches specialising in hand-made, gold and sterling silver designs. The collections are made locally and complemented by different jewellery ranges sourced from around the world. Engagement rings, wedding band & diamonds.

Fabulous & affordable gift ideas
Jewellery Repair Services include:
Gold & Sterling Silver
Ring re-sizing
Watch repairs & battery replacement
Re-threading of pearls and beads



10 Anderson Street, Brighton
Phone 03 5701 3910
32 Carpenter St, Brighton VIC
3186 0451 225 737

Thank you for shopping local ~ 31 ~



GALLERY 90

THE HOME OF FINE FURNISHINGS AND GIFTWARE



A boutique store filled with treasures you'll fall in love with



80 Gavan Street Bright, Vic. 3741
Email: info@gallery90.com.au Fax: (03) 5755 1206
Phone: (03) 5755 1385 Mobile: 0428 527 068
www.gallery90.com.au





**Every day, nature creates
a new masterpiece.**

**We capture and curate
them for your enjoyment.**



**ALPINE
LIGHT
GALLERY**

**102A GAVAN ST, BRIGHT
WWW.ALPINELIGHT.COM.AU**





"A treasure trove of wonderful art and quirky gifts sure to have you smiling as you wander through this historic little gallery"

"As you walk into the studio you are transported to a wonderland of amazing and beautiful art designed by our gifted and extremely talented artist Lisa Bishop. An experience you will never forget and want to return for more. Each item is unique like the creator"

"A sensory feast for the eye and the soul"

"Inspiration, colour space, lively & creative"

"A quirky colourful gift store with unique items in a wonderful country town of Chiltern"



Our Way of Thinking about... The Finer Things of Life.

We are very passionate about the jewellery we sell, it is almost all handcrafted by specialist antique jewellery designers. Our pieces are unique to our store, they are not mass produced or available from a catalogue but are timeless reproductions of vintage designs and are hand crafted by valued artisans.

We sell beautiful vintage jewellery & stylish pieces for your home - so come and visit and experience the warm glow and feel of days gone by.



Est. 1990

Elegant Acquisitions

16 Camp Street Beechworth Ph: 03 5728 2248
Mob: 0428 573 519 e: elizabethmason@westnet.com.au

MERCHANT RUTHERGLEN

122 Main St, Rutherglen
0417 562 791
e: merchant.rutherglen@gmail.com





The Tartan Fox



Image: Kinney

Kinney
Nancybird
Alias Mae
Nude Lucy
Rue Stiic
Status Anxiety
Zoe Kratzmann
EOS
Sol Sana Shoes
Lilya
Staple the Label
Apartment Clothing
Caverley
Alessandra
Nudie Jeans
Nobody Denim
Oncewas



fashion

footwear

accessories

lifestyle

Shop 1, 82-84 Gavan Street, Bright, VIC, 3741 ph: 03 5750 1094 thetartanfox.com #thetartanfox

TAWONGA SOUTH

BUTCHERY

Your passionate, family owned butchery serving the Upper Kiewa Valley & Falls Creek communities, proudly owned & operated by Will & Monika Hood.

-
- In-house smoked products
- Quality local produce
- Fresh seafood every Friday
- Event catering
-

1/211 Kiewa Valley Hwy, Tawonga South
 Ph: 03 5754 1888

tawongasouthbutchery.com.au



WhippsDesigns

Custom spherical fire pits hand cut in Mt Beauty

Workshop tours by appointment

whippsdesigns.com.au | 0408 123 801



photography by Charlie Brown @mountainside.net.au



For Lovers of Fine Art

We love Australian art and connecting wonderful people with some of Australia's best visual artists.

We take great pride in working with such talented people and take pleasure in installing art works that will be admired and appreciated for generations to come.

There is no better, more affordable way to beautify and enrich your home and life than with a well-selected piece of art.

Representing a select number of skilled highly trained artists, we delight in promoting excellence with our contemporary realist paintings, sculpture and studio glass.

Open - Everyday from 10am - 5pm
or by appointment

Framing available and done in - house



Myrtleford Gallery
for lovers of fine art

51a Standish St. Myrtleford VIC. 3737

www.myrtlefordgallery.com ph: 0427929974 or 03 57521213

BRIGHT LAUNDRY

- EST 1989 -

Quality Linen Servicing



Local Business supporting Local Community

- Quality linen service supplier based right here in Bright.
- Providing quality linen to accommodation and hospitality businesses.



Quality Linen Servicing

**The Bright Laundry
Community Circle is an
initiative that reinvests 1%
of all revenue into local
community projects and
initiatives. A virtuous circle
of community support.**



61 Churchill Ave, Bright VIC 3741



03 5750 1205



service@brightlaundry.com.au



brightlaundry.com.au

Personalised
service, secure
bookings + access
to assistance.

Here for you now
and in to the future!

Travel & Cruise NORTH
EAST



ATAS A11844

☎ 03 5755 1121 ☎ 03 5722 9600
✉ allstaff@travelncruise.com.au

30 Ovens St,
Wangaratta
Vic 3677

🌐 travelncruise.com.au
f @travelncruisenortheast

AIRFARES . GROUP TRAVEL . CRUISING . TOURING . ACCOMMODATION . CAR RENTAL
COACH & RAIL . CORPORATE TRAVEL MANAGEMENT . FOREIGN EXCHANGE
INSURANCE . FARMING & TECH VISITS . LUGGAGE



MOOD & REALM



Massage and Wellness

Observe your mood, take a deep breath, surrender.

Bringing the luxury of massage to you. With a range of wellness-oriented treatments to support the unique needs of every client.

*remedial / deep tissue / relaxation
lymphatic drainage / pregnancy massage*

Take advantage of the tranquility that your home offers with more privacy and prolonged relaxation.

Convenient and comfortable with no hassle or added stress of traffic or parking.

Health Funds Available.



0429 489 554

www.moodandrealm.com.au

Your Mobile Massage Specialist



Beautiful In Bright Hair Studio



Open Tuesday - Friday
& 3 late nights
03 5755 2033
6/r Ireland Street Bright



Bright Upholstery



**Traditional
Modern
Commercial
Retro**



Chris Page
0403 476 919
1/34 Churchill Ave Bright 3741
e: chrispage0101@gmail.com

www.brightupholstery.com.au

Tom's Rural Tree Services

Our Tree Services:

- ✓ Tree removal and pruning
- ✓ Tree habitat installation and creation
- ✓ Tree bracing
- ✓ Tree stem and soil injection
- ✓ Aerial rescue and retrieval
- ✓ Land clearing
- ✓ Small-scale earth excavations
- ✓ Excavator flail mulching
- ✓ Weed spraying
- ✓ Root barrier installations
- ✓ Tree drone surveys
- ✓ Tree mulch sales

- ☎ **0481 285 576**
- 🌐 www.tomsruraltreeservices.com
- 📧 officetomsruraltreeservices@gmail.com



Professional & Qualified Service
(with supervisor)

THE LITTLE CHOP SHOP



BARBER

SAME DAY APPOINTMENTS

CALL/TXT: 0412 200 682



SHOP 2, RIVERSIDE WALK, BRIGHT VIC 3741



/THELITTLECHOPSHOPBRIGHT

Nail & Beauty FX

BY SUE LUNARDI

0407 770 008

SNS/Acrylic nails

Shellac

Spa Pedicures

His/Her waxing

Lash Lift

Lash Extensions

Lash/Brow Tinting

Manicures



nailbeautyfx@gmail.com
Myrtleford



Celebrating 70 Years



Property Sales



Property Management



Holiday Rentals

D|R|E

DICKENS
real estate



info@dickens.com.au



(03) 5755 1307



www.dickens.com.au



20 Ireland Street | Bright | Victoria | 3741

Lime Wedge Platters

My platters and grazing boxes always combine a delicious selection of cheeses, deli meats, crackers, dips and seasonal fruit. All boxes and platters can be customised, please let me know any food allergies or intolerances when ordering.

Delivery is free within Bright for platters. There is a \$10 delivery fee for grazing boxes to Harrierville and Myrtleford.

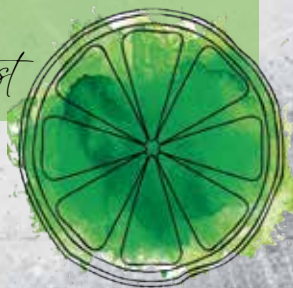
Anna Kelly

limewedgeplatters@gmail.com

0419 110 874

www.limewedgeplatters.com

P.S. Local platters available on request



Let Alpine Concierge take care of you on your stay in Bright & surrounds

Imagine arriving to your accommodation where a scrumptious selection of food hampers awaits you with dinner and breakfast for the whole family sorted.

We have equipment for hire to make your stay stress free and comfortable. We deliver and set up so you don't have to worry about a thing!

Food Hampers • Equipment Hire • **Pantry Shopping**



For local knowledge on the things you love here in the Alpine region

Alpine Concierge

For our full range of hire equipment and services visit www.alpineconcierge.com.au or call Joanne Brain today on 0439 389 902.

Food Hampers | Equipment Hire | Pantry Shopping | Concierge Services

Cheeky Bits

OPEN FROM 10AM BOUTIQUE

BEAUTY, SPA,
HAIR & FASHION

03 5750 1717

Shops 1-2. 87-89 Gavin
Street, Bright
VIC 3741
EST 2007

THE HOTTEST IN
BEAUTY!

EYEBROW FEATHERING
COSMETIC TATTOOING
BODY PIERCING
TEETH WHITENING
5 ELEMENTS FACIAL
MENS BARBERING

cheekybitsboutique.com.au

LUXURY SALON
& RETAIL IN BRIGHT

Visit our online store to shop CheekyBits!

cheekybitsofficial.com.au



HALFMOON CREEK WEDDINGS & EVENTS

Are you looking for that perfect off grid hideaway venue for your wedding?



Halfmoon Creek is the perfect place for a romantic destination wedding.

You and your guests will have the property to yourselves and the beautiful natural outlook will make for a spectacular backdrop for your special day.

Once the sun goes down, the music starts and the hand-crafted barn and tree tops light up, you can't help but enjoy yourselves in this beautiful eco friendly setting.

Located by the creek nestled in the small but quaint town of Wandiligong, Halfmoon Creek will help make your day one to remember.



Peaceful, tranquil, natural...perfect



By appointment only.

223 Growlers Creek Road, Wandiligong VIC Phone: 0408 320 753
www.halfmooncreek.com.au





Elm Dining offers a 'made with love' seasonal menu where the best produce of the region is the local hero. Pair this with perfectly matched wines from our extensive cellar from both local and international wineries.

elmdining.com.au


elm + ◉ **THE YARD** ◉
dining BRIGHT



Feel the fun, buzzing vibe of The Yard Bright from the moment you step inside. Offering a curated selection of Southern American style share plates and quick bites, Australian Botanical cocktails, and a wine list that focuses on local vineyards.

~ 47 ~

theyardbright.com.au



Lamb on Gavan is a homestyle eatery serving authentic Greek Souvlaki's and other traditional delicacies. Enjoy some delicious flavours of the Aegean while enjoying our beautiful courtyard.

Using meats marinated in-house and slow-cooked over charcoal our souvlaki brings in the crowds day and night.

We also look after those that follow a plant based diet and options for gluten free.

Picnic & takeaway packs, souva bowls, dip & pita packs and salad bowls also available

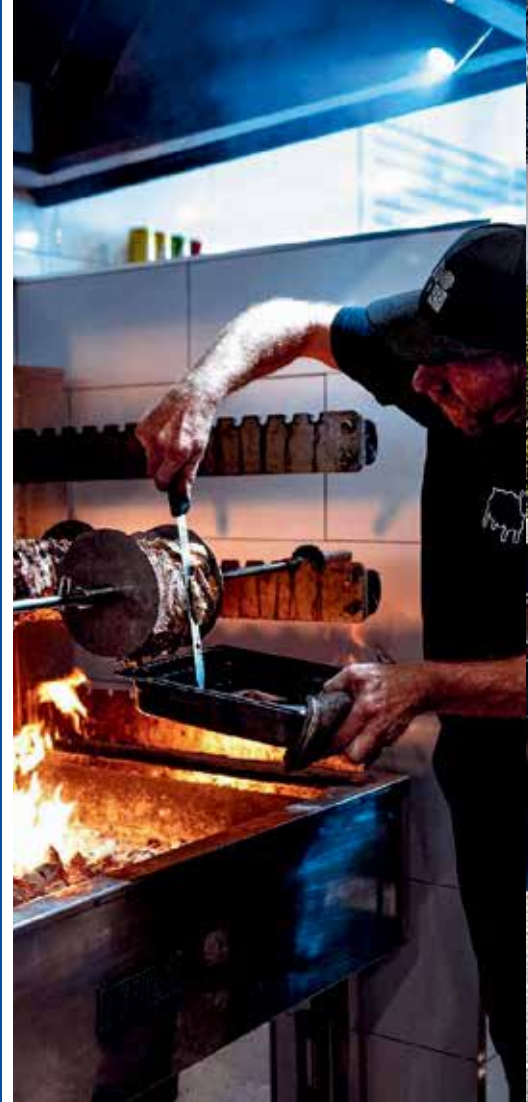


LAMB ON GAVAN

(03) 5752 5343

lambongavan@gmail.com

Thursday to Sunday 12pm till 8pm.



Woodfire | Desire

Mobile Pizza Catering

Parties, Festivals, Weddings, Functions

'We Bring The Ovens To You'

Contact us:

0408077969

info@woodfiredesire.com.au

www.woodfiredesire.com.au

Check out our socials!



@woodfiredesire





Welcome to the Happy Valley Hotel
Situated on the Great Alpine Road in Victoria's
vibrant Alpine Region, 4km south east of Myrtleford, we have
an excellent reputation for quality dining using local
ingredients and our wine list showcases wines of the region.

*We take pride in ensuring your experience with us is one
to remember. Looking forward to seeing you soon.*

4994 Great Alpine Road, Ovens Victoria 3738

03 5751 1628

Open 5 days Wednesday to Sunday

Lunch 12 til 2.30pm

Dinner 6pm til 8.30pm

Closed Mondays and Tuesdays

~ 49 ~



Moments & Memories Tea Room

High Tea is our speciality - bookings required



We cater for all your function requirements. Large and small group bookings available.



Our Devonshire & Pikelet Teas, Drinks, Cakes, Biscuits & Slices are available all day.



Take a moment to step back in time & make a memory with us...

We specialise in old fashioned country style cooking. Everything made in house. Gluten free options available.



Serving Breakfast, Morning/Afternoon Tea and Luncheon



34 Camp Street Beechworth 3747 Phone: 03 5728 2273
moments-memories-tearooms.com.au



Larder & Cafe

Locally Roasted Coffee - Fusion Food - Home Baked Cakes & Slices - Boutique Jams & Relishes - Indoor & Alfresco Dining - Eat In & Takeaway

At Lilli Pilli Larder, you'll discover an explosion of flavour, with our daily menu inspired by cuisines from around the world & made fresh in-house every day. Stay warm & cosy inside, or enjoy the sunshine in our charming cafe garden.



Follow us for daily specials & seasonal opening hours



225 Kiewa Valley Highway, Tawonga South





SNOWLINE HOTEL

The best little pub in the High Country

Great selection of local & craft beers on tap
Seasonal Menu created by international chefs
HUGE outside deck & warm fires inside
LIVE MUSIC | Great for Families

237 Great Alpine Rd, Harrietville
(20mins from Bright)
Call us on 5759 2524
www.snowlinehotel.com.au



BOOK YOUR TABLE HERE



See our current Menu



Check our social media pages for events

Open 7 days from 12pm
Kitchen trading hrs may vary outside of peak season



HENLEY'S

• WINE BAR & KITCHEN •



'FAMILY, FRIENDS, GREAT FOOD & FUN TIMES

Located in the heart of Milawa is Henley's Wine Bar & Kitchen, the place to eat, drink & relax.

- Delicious Menu
- Beer & wine.
- Allpress Coffee
- Redbank Cellar Door
- Three Chain Road Gin & Whiskey
- Woodfired pizzas
- Takeaway available
- Spacious beer garden
- Family & pet friendly
- Live music on weekends
- Weddings, functions & events

Open Hours (7 days a week)

Mon-Thurs 9am-4pm

Friday- 9am-8pm, Sat & Sun 9am-5pm

Phone: (03) 5727 3904

Address: 1597 Snow Road, Milawa

www.henleyswinebar.com.au



~ ~ ~
The ~ ~ ~
**RIVERDECK
KITCHEN**

EXPERIENCE THE DESTINATION



OPEN DAILY

8am - 3.30pm

All day breakfast

Fully Licensed

Deck Dining

Events

Family Friendly

16 Howitt Lane, Bright 3741

03 5755 2199

theriverdeck.com.au

BASTONI

pizzeria

TRADITIONAL ITALIAN PIZZERIA
DISCOVER A NEW LEVEL OF TASTE



**NEXT TO MYRTLEFORD PIAZZA
140 MYRTLE STREET**

WED TO SUN FROM 5 TILL LATE
INDOOR AND OUTDOOR DINING
ITALIAN PIZZAS, ENTREES AND DESSERTS
FULLY LICENCED
NO BYO



SCAN ME

035751478

WWW.BASTONIPIZZERIA.INFO

~ 55 ~



VISIT ELDORADO

Home of Victoria's
Smallest Pub



The McEvoy Tavern

Eldorado is known as a tiny town that is full of hidden gems to discover. It's off the beaten track, and the perfect location for a true-blue country day out. You can experience some gold panning and gemstone hunting down the creek, find great camp spots, go on numerous bush walks, visit local artisan businesses, and start or end your day with a cool drink and hot meal at the **McEvoy Tavern**.

The McEvoy Tavern is a favourite among locals and tourist alike. It may be the **smallest pub in Victoria**, but it is mighty in character, charm, and fun. With a rustic decor, country views, friendly staff and all your pub favourites including local brews and wines, live music, pool table, jukebox, arcade table, outdoor beer garden, and the recently renovated historic shed which can be booked for indoor dining and large groups.

This is all topped off with an incredible pub menu that features the best and biggest burgers, parma specials, meaty man-meals and seriously great vego and vegan options. And if you arrive into town in the morning be sure to stop in for a coffee that will rival a Melbourne latte.



Rustic Shed Dining



Great Food



McEVOY TAVERN

ELDORADO, VIC.

*The Smallest Pub
in Victoria!*

**PUB - GENERAL STORE
AND POST OFFICE**

37 MacKay St, Eldorado VIC
See facebook for latest opening hours

BOOK A TABLE: (03) 5725 1778

COME ON IN FOR A RUSTIC EXPERIENCE



Live Music

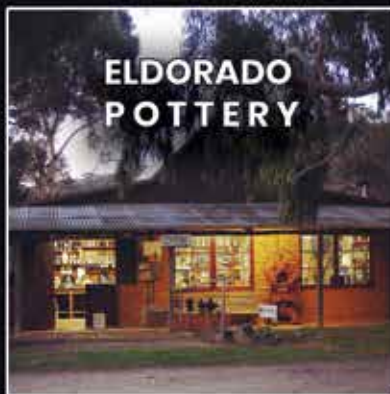


Cold Drinks

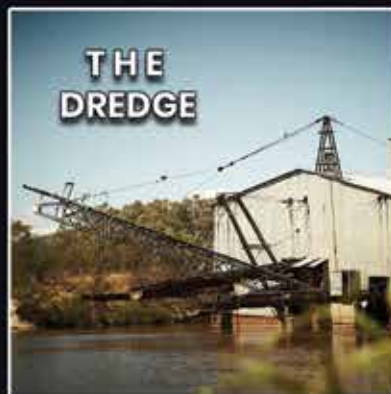
**LUNCH & DINNER
LOCAL DRINKS
GREAT COFFEE
GENERAL STORE
POST OFFICE
LIVE MUSIC NIGHTS
FUNCTIONS
COUNTRY SETTING
A REAL HIDDEN GEM**

ELDORADO DAY TRIP

What else to do while you're visiting:



ELDORADO POTTERY



THE DREDGE



ELDORADO MUSEUM



GOLD PANNING



BUSH WALKING



OFF-GRID LIVING FESTIVAL



ROADHOUSE

POREPUNKAH

7 NICHOLSON ST, POREPUNKAH VIC 3740

MON-SUN: 6AM TO 8PM



TAKEAWAY MENU

BEVERAGES

S \$3.99 L \$4.99

Coffee

(Cappuccino / Latte / Flat White / Long Black / Iced / Espresso Macchiato/ Espresso / Mocha)

Tea

Hot Chocolate

Iced Chocolate

Chai Latte

Milk (Hot/Cold)

BREAKFAST

Buttered Toast

\$3.00

Egg & Bacon Roll/Sandwich

\$6.50

Eggs on Toast

\$7.50

(Fried, Scrambled, Poached)

Eggs & Grilled Tomato on Toast

\$9.00

Sausages & Eggs on Toast

\$10.00

Steak & Eggs on Toast

\$12.50

SANDWICHES

Chicken & Mayo

\$4.99

Chicken & Peri-Peri

\$4.99

Ham & Cheese

\$4.99

Ham, Cheese & Pickles

\$4.99

Roast Beef & Chutney

\$4.99

MUFFINS

Blueberry or Chocolate

\$4.99

INDIAN

Chicken Biryani

\$14.99

Lamb Roganjosh Curry

\$14.99

Beef Vindaloo Curry

\$14.99

Butter Chicken Curry

\$14.99

Plain Rice

\$4.99

Any Curry & Rice

\$9.99

Flavoured Rice

\$7.00

BURGERS

Punkah Burger

\$9.99

Pure Beef burger, tomato, lettuce, beetroot, pineapple, egg, onion, bacon & cheese.

Cheese Burger

\$7.99

Pure Beef burger, tomato, lettuce & cheese.

Burger - Plain

\$6.99

Pure Beef burger, double bacon, tomato, lettuce & cheese.

Fish Burger

\$9.99

Flake, tomato, lettuce & tartare sauce.

Chicken Schnitzel

Burger (Plain)

\$7.99

With lettuce & mayo.

Chicken Schnitzel

Burger (The Lot)

\$9.99

Chicken, tomato, lettuce, cheese, ham, pineapple & mayo.

Sweet Chilli Chicken Burger

or Wrap

\$9.99

2 sweet chilli chicken strips, lettuce, tomato, with either poppy seed or sweet chilli dressing.

Rolls (Beef, Chicken, Pork

or Lamb)

\$9.99

MAKE IT A COMBO for an extra \$3.99
(add a 375ml drink and small chips)



STEAK SANDWICHES

Steak Sandwich (The Lot)

\$11.99

Scotch Fillet Steak, pineapple, egg, onion, bacon, cheese, beetroot, tomato, lettuce.

Steak Sandwich (Plain)

\$9.99

Scotch Fillet Steak, onion, lettuce & tomato.

MRS MACS PIES

Traditional Pie

\$4.50

Pastie

\$4.50

Sausage Rolls

\$3.50

Beef Angus Pie

\$4.80

LIGHT MEALS

Hake

\$7.00

Flake

\$7.00

Blue Grenadier

\$7.50

Flathead Tails

\$2.50

Crab Sticks

\$2.50

Crumbed Prawns

\$2.00

Min. Chips

\$5.00

Gravy

Sml \$1.00 Lrg \$3.00

Scallops

\$2.00

Dim Sims

\$1.50

Spring Roll

\$3.99

Chicko Roll

\$3.99

Chicken Nuggets

\$1.50

Potato Cake

\$1.50

Onion Rings

\$0.50

Wingdings

\$2.50

Hash Browns

\$1.50

Spicy Potato Wedges

\$6.00

(with sour cream)

Battered Sav

\$4.99

Pineapple Fritter

\$1.50

Salt 'n' Vinegar Chicken Strips

\$2.50

Sweet Chilli Chicken Strips

\$2.50

Chicken or Lamb Souvalaki

\$14.00

Hot Dog

\$4.50

Cheese Dog

\$6.00

Deluxe Dog

\$7.50

(cheese, bacon, onion & sauce)

Cheese & Bacon Potato Cakes

\$5.00

Salad Rolls / Sandwiches

\$9.99

with assorted roast meats,

relish or chutneys

Snack Pack - lamb or chicken or

\$14.00

mixed plus chips

Chicken Pack - 2 x wingdings,

\$9.99

2 x chicken strips, 2 x nuggets &

2x garlic balls

Seafood Pack - 1x prawn,

\$14.99

1x scallop, 1x crabstick, 1x flathead tail

WE DELIVER - FIND US ON



Menulog



Roadhouse by Qfix

PH: 03 5756 2345



@RoadhousebyQfix

CAFE CHULO

A TASTE OF HOME



Our delicious fusion of Nepalese and modern Australian food menu changes often but encompasses house brewed Chai made to our special recipe, traditional home made curries and freshly made cakes and muffins.

Come on in and see what's on the menu today...you are most welcome

105 Myrtle St, Myrtleford, VIC-3737

(03) 5751 5655 info@cafechulo.com.au



COFFEE STAINES

cafe & catering

All day breakfast

Build your own breakfast

Burgers, Sandwiches, Salads & more

Catering for all dietary requirements

Specialising in Gluten Free

Catering - Small & Large

Catering - Weddings & Events

72 Ford Street, Beechworth, Victoria

0457 286 060 / 0417 515 091



PEPPERBERRY

restaurant + bar + good times



WHERE FOOD TELLS STORIES

Pepperberry beckons you on a tantalising expedition through time. Our culinary offerings pay homage to the rich history of our hotel, evoking a sense of retro nostalgia.

Experience our expertly crafted contemporary menu using the best local produce and native Australian ingredients.

All-local wines embrace emerging varieties and makers. On-the-money cocktails kick off 70's dinner party feels.

Experience Pepperberry, the only restaurant in Bright & Surrounds listed in The Age Good Food Guide 2024.

THE 2024 AGE  goodfood



Nestled in Bright's freshest boutique hotel.

HARAHOUSE.AU

2 ASHWOOD AVENUE, BRIGHT

T 03 7018 2333

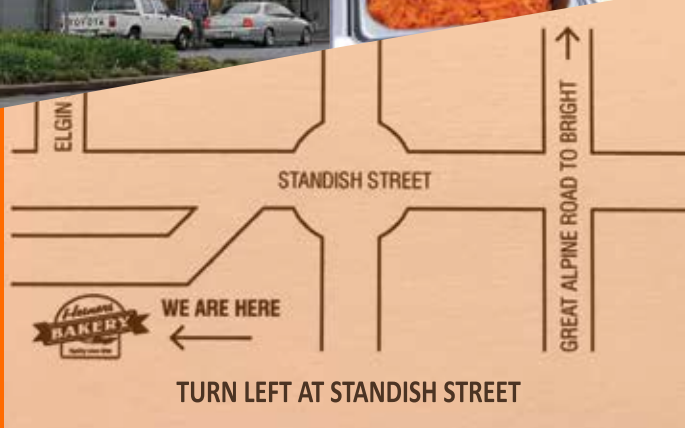


Yummo...

Heiners BAKERY

Quality since 1966

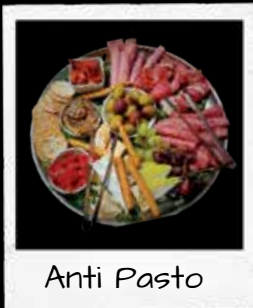
Myrtleford's original bakery has been baking traditional sweet and savoury pastries since 1966.



Large interior and exterior dining areas with children's play ground, toilets and ample car parking.

Trading hours: Mon - Fri 6am to 5.30pm
Sat 6am to 4.30pm
Sun closed

87 Standish Street, Myrtleford
03 5752 1430



Anti Pasto



Quail



Seafood Platter



Amatriciana



Marinara

OPEN FOR LUNCH & DINNER WEDNESDAY – SUNDAY

Here at Club Savoy we have all your function needs covered! Whether it be Birthdays, Christenings, Reunions, Conferences or even just after-work drinks on the deck. With three separate function rooms and a private bar, we have a space suited to your needs. Complete with an impassable function package with 15+ options to satiate everyone's needs.

As a proud Community Club, we dedicate the last Sunday of each month to giving back to our local community groups. We run a smorgasbord dinner where a percentage of door sales are donated to a nominated group. It encourages the local community to come together to socialise while also raising money at the same time.



● **HOMEMADE GNOCCHI** ● **TRADITIONAL PASTA SAUCES** ● **HOMEMADE LASAGNE**

Club Savoy
myrtleford

@clubsavoymyrtleford
www.clubsavoy.com.au

03-5751 1296



252 - 254 Great Alpine Road Myrtleford



ROADHOUSE

OXLEY

1152 SNOW RD, OXLEY VIC 3678

MON-SUN: 6.30AM TO 8PM



TAKEAWAY MENU

BEVERAGES

S \$4.50 L \$5.00

Coffee

(Cappuccino / Latte / Flat White / Long Black / Iced / Espresso Macchiato/ Espresso / Mocha)

Tea

Hot Chocolate

Iced Chocolate

Chai Latte

Milk (Hot/Cold)

BREAKFAST

Egg & Bacon Roll/Sandwich \$7.50

Baked Beans on Toast \$7.50

Eggs & Grilled Tomato on Toast \$9.00

SANDWICHES

Chicken & Mayo \$6.50

Chicken & Peri-Peri \$4.99

Ham & Cheese \$6.50

Ham, Cheese & Pickles \$6.50

INDIAN

Lamb Roganjosh Curry \$14.99

Beef Vindaloo Curry \$14.99

Butter Chicken Curry \$14.99

Plain Rice \$4.99

Garlic Naan \$4.99



BURGERS

Oxley Burger \$12.00

Pure Beef burger, tomato, lettuce, beetroot, pineapple, egg, onion, bacon & cheese.

Cheese Burger \$10.00

Pure Beef burger, tomato, lettuce & cheese.

Chicken Schnitzel

Burger (Plain) \$12.00

With lettuce & mayo.

Chicken Schnitzel

Burger (The Lot) \$15.00

Chicken, tomato, lettuce, cheese, ham, pineapple & mayo.

Sweet Chilli Chicken Burger

or Wrap \$14.00

2 sweet chilli chicken strips, lettuce, tomato, with either poppy seed or sweet chilli dressing.

Rolls (Beef, Chicken, Pork

or Lamb) \$8.00

STEAK SANDWICHES

Steak Sandwich (The Lot) \$15.00

Scotch Fillet Steak, pineapple, egg, onion, bacon, cheese, beetroot, tomato, lettuce.

Steak Sandwich (Plain) \$12.00

Scotch Fillet Steak, onion, lettuce & tomato.

LIGHT MEALS

Grilled Fish \$8.99

Flake \$8.00

Crab Sticks \$2.50

Min. Chips \$5.00

Gravy Sml \$1.00 Lrg \$3.00

Scallops \$2.00

Dim Sims \$1.50

Spring Roll \$4.00

Chicko Roll \$4.00

Chicken Nugget ea. \$1.00

Potato Cake \$1.50

Wingdings \$2.50

Hash Browns \$2.00

Battered Sav \$4.00

Sweet Chilli Chicken Strips \$2.50

Egg & Bacon Roll \$7.50

Hot Dog \$4.00



PH: 03 5727 3300

TU
VIETNAMESE
STREET FOOD



Tu Vietnamese Street food

Myrtleford

WONTONS
SPRING ROLLS
RICE PAPER ROLLS
NOODLE SALAD BOWLS
SOUP DISHES
RICE DISHES
KIDS MEALS
AND MUCH MORE...

All with authentic Vietnamese
flavours and ingredients

109 MYRTLE STREET
MYRTLEFORD, VIC 3737

0415 995 041

OPEN 7 DAYS 11.00AM-9.00PM
(KITCHEN CLOSSES AT 8.30PM)





ALPINE

HOTEL - BRIGHT

Eat - Play - Stay

Bright's iconic landmark hotel has been fully refurbished to offer more dining, event and entertainment options. Enjoy the veranda and the new Tigre Vita restaurant upstairs.

- Bar & Bistro
- Beer Garden
- Family Friendly
- Local Wine & Beer
- Functions/Events/Entertainment
- Accommodation
- Seasonal Menus
- House Made Breads & Pizza



Open daily from 11am

03 5755 1366

Alpinehotelbright.com.au





LICENCED CAFÉ AND PROVIDORE FULL OF LOCAL GEMS. LOCATED IN THE HEART OF POREPUNKAH, ACROSS THE ROAD FROM THE OVENS RIVER AND MURRAY TO MOUNTAINS RAIL TRAIL . SERVING DELICIOUS HOMEMADE PIES AND SAUSAGE ROLLS, LOCALLY MADE SWEET TREATS AND FRESHLY ROASTED SIXPENCE COFFEE.

3 Nicholson Street, Porepunkah
0493 177 877





ROADHOUSE

BRIGHT

12 DELANEY AVE, BRIGHT VIC 3741

MON-SUN: 6AM TO 9PM



TAKEAWAY MENU

BEVERAGES

S \$1.00 L \$2.00

Coffee

(Cappuccino / Latte / Flat White / Long Black / Iced / Espresso Macchiato/ Espresso / Mocha)

Tea

Hot Chocolate

Iced Chocolate

Chai Latte

Milk (Hot/Cold)

BREAKFAST

Buttered Toast \$3.00

Egg & Bacon Roll/Sandwich \$7.99

SANDWICHES

Chicken & Mayo \$6.99

Chicken & Peri-Peri \$6.99

Ham & Cheese \$6.99

Ham, Cheese & Pickles \$6.99

Roast Beef & Chutney \$6.99

MUFFINS

Blueberry or Chocolate \$5.99

The only Indian Restaurant in town...



INDIAN

Chicken Biryani \$14.99

Lamb Rogan Josh Curry \$14.99

Beef Vindaloo Curry \$14.99

Butter Chicken Curry \$14.99

Plain Rice \$4.99

Any Curry & Rice \$9.99

Flavoured Rice \$7.00

BURGERS

Burger with Lot \$12.00

Pure Beef burger, tomato, lettuce, beetroot, pineapple, egg, onion, bacon & cheese.

Buffalo Burger \$11.00

Pure Beef burger, tomato, lettuce, beetroot, bacon, cheese & onion.

Tropo Burger \$10.00

Pure Beef burger, tomato, lettuce, cheese, pineapple & mayo.

Cheese Burger \$8.00

Pure Beef burger, tomato, lettuce & cheese.

Bacon Burger \$10.00

Pure Beef burger, double bacon, tomato, lettuce & cheese.

Fish Burger \$10.00

Flake, tomato, lettuce & tartare sauce.

Chicken Schnitzel Burger (Plain) \$10.00

With lettuce & mayo.

Chicken Schnitzel Burger (The Lot) \$12.00

Chicken, tomato, lettuce, cheese, ham, pineapple & mayo.

Sweet Chilli Chicken Burger or Wrap \$9.99

2 sweet chilli chicken strips, lettuce, tomato, with either poppy seed or sweet chilli dressing.

Rolls (Beef, Chicken, Pork or Lamb) \$8.00

STEAK SANDWICHES

Steak Sandwich (The Lot) \$14.00

Scotch Fillet Steak, pineapple, egg, onion, bacon, cheese, beetroot, tomato, lettuce.

Steak Sandwich (Plain) \$12.00

Scotch Fillet Steak, onion, lettuce & tomato.

MRS MACS PIES

Traditional Pie \$4.99

Pastie \$4.99

Sausage Rolls \$4.99

Beef Angus Pie \$4.99



LIGHT MEALS

Hake \$7.00

Flake \$7.00

Blue Grenadier \$7.50

Flathead Tails \$2.99

Crab Sticks \$2.50

Crumbed Prawns \$2.00

Min. Chips \$4.99

Gravy Sml \$1.00 Lrg \$3.00

Scallops \$2.00

Dim Sims \$1.50

Chicken Dim Sims \$2.99

Spring Roll \$3.99

Chicko Roll \$3.99

Chicken Nuggets (6) \$5.50

Potato Cake \$1.50

Wingdings \$2.80

Hash Browns \$1.20

Spicy Potato Wedges (with sour cream) \$6.00

Battered Sav \$4.99

Pineapple Fritter \$1.50

Salt 'n' Vinegar Chicken Strips \$2.80

Sweet Chilli Chicken Strips \$2.80

Chicken or Lamb Souvalaki \$14.00

Egg & Bacon Roll \$7.99

Hot Dog \$4.99

Cheese Dog \$6.99

Deluxe Dog (cheese, bacon, onion & sauce) \$8.49

Cheese & Bacon Potato Cakes \$5.00

Salad Rolls / Sandwiches with assorted roast meats, relish or chutneys \$8.00

Snack Pack - chips, lamb or chicken or mixed \$14.00

WE DELIVER - FIND US ON



Roadhouse by Qfix

PH: 03 5755 1041



@RoadhousebyQfix



Cherry Walk Café

Located in central Bright is the ideal location to relax while enjoying a coffee, cake or meal. Open for breakfast and lunch, Cherry Walk Café offers indoor and outdoor seating, along with take away option. We are fully licensed too!



**SWEET
INDULGENCES**



**DELICIOUS
MEALS**



**FRESHLY
BAKED**

IN THE HEART OF BEAUTIFUL BRIGHT
Visit us and take in the views



6 Anderson Street, Bright 0408 226 771
cherry_walk@outlook.com

Opening hours

Monday, Tuesday Wednesday,

Friday - 8am-3:30pm

Thursday closed

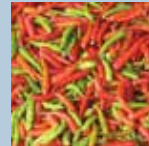
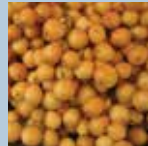
Saturday - Sunday 7.30am-3:30pm



- Lots of Vegetarian and Gluten free options
- Outdoor seating
- Group bookings
- Catering
- Wheelchair accessible
- Dogs allowed



SUGANYA'S THAI RESTAURANT



Authentic Thai Cuisine

Prepared by Suganya using traditional Thai herbs as taught by her Grandmother in central Thailand.

Dishes to suit all tastes

Tasty entrees, fragrant soups, stir fries & rich curries. Try the subtle flavours of our Chicken & Cashew stir fry or Ginger Pork. How about our Curry Duck, Panang Beef, or Crispy Chilli Prawns? No chilli or extra spicy — it's your choice.

Take Away Available

Phone orders taken from 5:00pm.

Fully Licensed

We stock a selection of wines from the local valleys chosen to complement our food. In addition, we have a range of popular Asian beers as well as local favourites.

Reasonable prices

- Entrees & soups from \$11.00
- Mains from \$23.00

Vegetarian or Gluten Free?

Wide choice of vegetarian dishes (vegan by request). Most of our dishes are gluten free.



Open from 5:30pm Monday — Saturday*

(*also open Sundays during holiday periods)

BOOKINGS ESSENTIAL TO AVOID DISAPPOINTMENT



Shop 2/11 Ireland St, Bright

(opposite the IGA supermarket)

Ph 5755 2380

(take away orders & bookings)

The Watchbox

**Woodfired pizzas,
craft beers & cider**

*We are a winery & café
and the perfect spot for your wedding...*

The Watchbox is Indigo Valley's latest place to eat, drink and relax, offering delicious woodfired gourmet pizzas, hand-cut chips, craft beers and ciders, all housemade.

The team has created a soft place to land in the middle of the delightful Indigo Valley. You will find The Watchbox only 20 minutes from Wodonga, 15 minutes from Yackandandah and Beechworth and only 20 minutes from Rutherglen.

The beautiful surrounds encourage an environment with no time limits, where you can laze and graze the day or evening away.

The Watchbox is the perfect venue for private events including weddings and other special functions.



1150 Indigo Creek Road,
Indigo Valley, VIC
0402 576 202
~ 71 ~

IL Centro Pizza House

94 Gavan Street
BRIGHT VIC 3741

Phone Orders **5750 1228**

OR 131 PIZZA

Dine-In(licensed) or Take Away

CLOSED MONDAYS AND SUNDAYS EXCEPT DURING SCHOOL

HOLIDAY PERIODS.. OPEN FROM 5:30PM

EMAIL: ilcentropizzahouse@gmail.com

PIZZA

- IL Centro Special:** Tomato, Ham, Mushrooms, Capsicum, Onion, Olives, Anchovies, and Cheese. **\$15.00 L\$23.00 F\$27.00**
- Seafood:** Tomato, Cheese, Anchovies, Mussels, Prawns, Baby Clams, Calamari, and Garlic. **\$15.00 L\$23.00 F\$27.00**
- Vegetarian:** Tomato, Cheese, Mushrooms, Capsicum, Onion, and Olives. **\$14.00 L\$22.00 F\$27.00**
- Aussie:** Tomato, Ham, Cheese, Egg, and Bacon. **\$15.00 L\$22.00 F\$26.00**
- American:** Tomato, Salami, Cheese, and Ham. **\$14.00 L\$22.00 F\$26.00**
- Super Special:** Tomato, Salami, Ham, Capsicum, Mushrooms, Pineapple, Prawns, Onion, Olives, Anchovies, Cheese. **\$16.00 L\$24.00 F\$28.00**
- Capricciosa:** Tomato, Ham, Mushrooms, Olives, Cheese. **\$14.00 L\$22.00 F\$26.00**
- Napoletana:** Tomato, Cheese, Olives, Capers, Anchovies. **\$14.00 L\$22.00 F\$26.00**
- Margherita:** Tomato, Cheese, Dried Basil. **\$12.00 L\$20.00 F\$24.00**
- Tropical:** Tomato, Ham, Pineapple, Cheese. **\$15.00 L\$23.00 F\$27.00**
- BBQ Chicken:** Tomato, Chicken, Mushrooms, Pineapple, Onion, BBQ Sauce, Cheese. **\$15.00 L\$23.00 F\$27.00**
- Bruschetta:** Garlic, Olive Oil and Pesto Base, Cheese, Capers, Onion, Fresh Tomato. **\$13.00 L\$21.00 F\$25.00**
- Meatlovers:** Tomato, Salami, Ham, Chicken, BBQ Sauce, Cheese, Bacon. **\$15.00 L\$23.00 F\$27.00**
- Mushroom Special:** Tomato, Ham, Mushrooms, Prawns, Cheese, Bacon. **\$15.00 L\$23.00 F\$27.00**
- Chefs Special:** Tomato, Ham, Mushrooms, Pineapple, Prawns, Onion, Cheese. **\$15.00 L\$23.00 F\$27.00**
- Sicilian:** Semi- Dried Tomato, Cheese, Chicken, Olives, Bacon. **\$15.00 L\$23.00 F\$27.00**
- Ron's Special:** Tomato, Chicken, Mushrooms, Pineapple, Onion, Capsicum, Prawns, Cheese. **\$16.00 L\$24.00 F\$28.00**
- Garlic Foccacia:** Garlic, Olive Oil, Herb. **\$11.00 L\$17.00 F\$20.00**
With CHEESE: \$12.00 L\$18.00 F\$21.00

For full menu of GOURMET PIZZAS please visit
<http://ilcentropizzahouse3741.com>

KITCHEN MENU

Kitchen open Thursday to Saturday, excluding school holidays

CHICKEN

- Chicken Schnitzel-** Served with chips and salad **\$24.00**
Chicken Parmigiana- Chicken Schnitzel with Napoli Sauce, Prosciutto, cheese served with chips and salad **\$26.00**
Pulled Pig Parmigiana- Chicken Schnitzel with BBQ Sauce, Pulled Pork and cheese topped with Aioli served with chips and salad **\$29.00**
Chefs Special Parmigiana- Chicken Schnitzel with BBQ Sauce, Mushrooms, Chorizo and Cheese topped with Aioli served with chips and salad **\$29.00**

FISH

- Beer Battered Flathead-**Served with chips and salad **\$24.00**
Crumbed Whiting- Served with chips and salad **\$24.00**
Grilled Barramundi- Served with chips and salad **\$27.00**
Salt & Pepper Squid- Served with chips and salad **\$27.00**

Schnitzel Burger- Seeded roll filled with a chicken schnitzel, lettuce, tomato, cheese and sweet chilli mayo served with chips **\$20.00**

PASTA

- Spaghetti**
Fettuccine
Potato Gnocchi
Gluten Free Penne **\$24.00**

PASTA SAUCES

- Bolognese-** Beef mince blended with tomato, garlic and herbs
Carbonara- Cream based sauce mixed with mushrooms, bacon, garlic and shallots
Napolitana- Tomato based sauce mixed with semi-dried tomato, roasted capsicum, olives, garlic and herbs

KIDS MENU

Kids Pizzas- Topped with 2 toppings, including Tomato paste and Cheese

- \$5.00**
Nuggets and Chips **\$10.00**
Fish and Chips **\$10.00**
Kids Spaghetti Bolognese **\$10.00**





*Ice cold beers on tap.
Lunch & Dinner 7 days a week
Full menu.
Eat in or take away*



Set in the heart of Myrtleford, the Buffalo Hotel is the place to meet friends and family for a meal, a drink, game of pool and Myrtleford's only TAB. With the refurbished bistro, great bar and relaxing outdoor room, the Buffalo Hotel Myrtleford is more than just a pub! You can sit outside in the beer garden and soak up the summer breeze while you have a relaxing meal - the whole family will love it!



49 Clyde St Myrtleford VIC. 3737 Phone: 5751 1400

Mt. Beauty

Take Out

- Great Coffee • Gourmet Burgers
- Fresh Fish and Chips • Hot Food
- Ice Creams • Sushi • Rice Paper Rolls
- Salads • Thick shakes and to die for Cakes!



Follow us on



Phone orders welcome 0411 695 546

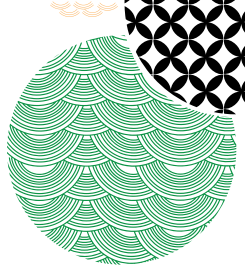
16 Kiewa Crescent, Mt Beauty Vic 3699



Summer hours
 Monday - Saturday
 LUNCH: 11am - 2pm
 DINNER: 5.30pm - 7.30pm
 Follow us on facebook for updates



KATSU
 JAPANESE RESTAURANT



9 Barnard Street
 Bright, Victoria (03) 5750 1097



Open since 2012, Japanese Katsu Cafe in Bright serves sushi, ramen, tonkatsu and typical Japanese snack foods. You can eat in, as it's fully licenced and has a selection of beer, sake and umeshu (Japanese plum wine) together with a selection of Australian wines.
 Take away also available



**Modern Italian À la carte Restaurant
 in Bright, North East Victoria.**

*Sole e Luna opened its doors in 2008.
 The restaurant serves what Frank proudly calls modern Italian dishes with a twist. You can savor the tastes of not only everyday Italian favorites but also a few new takes on the traditional.*



☎ (03) 5750 1861 📠 0424 335 405

✉ frank@soleeluna.com.au

🌐 soleeluna.com.au

📘 @soleelunabright

📍 106 Gavan St Great Alpine Rd, Bright VIC 3741

TAKE AWAY MENU

Garlic bread / Chips / Broccoli / Mixed Salad - **\$5ea**
 Calamari Fritti, Chips & Tartare Sauce - **\$12**
 Beef & Mozzarella Arancini (3) with Aioli - **\$12**

PASTA

Choose your pasta & sauce

DRY PASTA \$23

Spaghetti, Linguine, Fettuccine, Shell, Penne

FRESH HOME MADE \$26

Tagliatelle, Pappardelle, Gnocchi

SAUCES

NAPOLI - Tomato & Basil

BOLOGNESE - Beef Mince & Napoli

CARBONARA - Bacon, Caramelised Onion, Egg & Cream

CREAMY MUSHROOM - A selection of assorted Mushrooms with Porcini & Parmesan Puree

VENISON MEATBALLS - with Pine nuts & Raisins in a Napoli Sauce

BEEF RAGU - Slow cooked diced Beef in a Napoli Sauce with Parmesan

SICILIAN - Olives, Capers, Salami & Chilli in a Napoli Sauce

MARINARA - Prawns, Scallops, Calamari, Mussels, Chilli, Garlic, & a touch of Napoli Sauce

CHARGILLED MEDITERRANEAN - Vegetables with Pesto

BEEF LASAGNE \$23

DESSERTS

Tiramisu / Panna cotta (mixed berries) **\$10ea**





2125 Great Alpine Rd, Everton
VIC 367

Phone: 0413 664 677



..... The Evo



During your stay at Everton Hotel, you'll feel right at home. The atmosphere is comfortable and homey, and the staff are friendly and welcoming. At The Evo, we strive to create a warm and welcoming atmosphere, where every guest can experience the comforts of home amidst the beauty of the countryside. Whether you're seeking a relaxing getaway or a comfortable stopover on your journey, we have everything you need. With convenient off-street drive-through car parking available, transportation is a breeze. A caravan park awaits your caravans just next to our hotel, providing a convenient option for accommodation.

.....



The Everton Hotel is located in North East Victoria on the Great Alpine Road. Nearby attractions include the Murray to the Mountains Rail Trail, wineries, golf courses and the Victorian High Country. Everton is an easy 2.5 hour drive from Melbourne, 45 minutes drive from Albury, 12 minute drive from Beechworth, 25 minute drive from Bright and 1 hour from Mount Hotham.



HISTORIC PUB

OPEN THURSDAY TO MONDAY

LUNCH & DINNER

CLASSIC COUNTRY PUB MENU

PHONE: 5719 2450

WWW.TARRAPUB.COM.AU

MAGNIFICENT BEER GARDEN

LIVE MUSIC ON WEEKENDS

2322 BEECHWORTH-WANGARATTA RD

TARRAWINGEE VIC 3678



**BRIGHT
ELECTRIC
BIKES**

Bike Hire, Tours & Sales

www.brightelectricbikes.com.au
info@brightelectricbikes.com.au

ph. (03) 5755 1309

*2 Delany Avenue
Bright, Victoria*



Cruise the Murray to Mountains Rail Trail in comfort and style with the largest - and newest - range of bikes in the region!

Our state-of-the-art European designed and made electric bikes make cycling a dream. And best of all, they're road legal and no licence is required.

Visit us online to discover more about our bike hire options, prices, great value tours and opening hours. Book online today!

Photograph by David Hannah

- **Hire** - In addition to eBikes (Premium, Regular & eMTB), we have a large range of quality step-through cruisers, MTB's, Kids MTB's, plus child trailers and dog trailers.
- **Tours** - We've put together a selection of mouth-watering self-guided cycle tours that showcase the highlights of the region. Choose from half-day, full-day and multi-day tours.
- **Sales** - Loved your eBike riding experience so much that you want to take it home? We've got you covered with brand new German designed and made eBikes to give you many years of cycling joy.

Tandem Paraglidge



Ph 0428 854455
www.activeflight.com.au

Feel Secure with the Best.

Our team is led by 7 times Australian Champion, Fred Gungl.

No experience required.

3 flight Options available.

Gift Vouchers and Video Available

BEECHWORTH LUNATIC ASYLUM

NIGHT-TIME GHOST TOURS
DAYLIGHT HISTORY TOURS
PARANORMAL INVESTIGATIONS

ASYLUM GHOST TOURS

BOOKINGS ESSENTIAL

0473 376 848

WWW.ASYLUMGHOSTTOURS.COM



PUT YOUR SKILLS TO THE TEST IN THE REGION'S NEWEST
IMMERSIVE PUZZLE EXPERIENCE



MAYDAY

Escape Rooms

BOOKINGS ESSENTIAL

FIND THE KEYS | SOLVE THE PUZZLES | BEAT THE CLOCK
DO *YOU* HAVE WHAT IT TAKES TO ESCAPE?

MAYDAYESCAPEROOMS.COM.AU — 0477 271 124



Taste, Shop & Experience



Pepo Farms is the #1 Tourist Attraction between Myrtleford and Bright on the Great Alpine Road.



Visit Australia's only working Artisan Mill, where you can taste gourmet oils, experience seeds and nuts from our micro roastery and indulge in our world famous couverture chocolate coated pumpkin seeds.



SCAN for directions

Shop Hours
Mon-Fri: 9am to 5pm
Sat-Sun: 10am to 4pm
Public Holidays: 10am to 4pm

Call: 03 5752 1199
5061 Great Alpine Rd
Ovens, Vic, 3738

Visit www.pepofarms.com.au

   @PepoFarms



 <http://snowdog.com.au>

 0491 723 650

 hello@snowdog.com.au

 snowdogtransport

From your door to anywhere. Hassle free.



Snow transport

Winery tours

Brewery day trips

Hiking transport

Hiking food drops

Airport pickups

Pure High Country

Experience the gateway to the Alpine National Park, just one hour's drive from Bright



Dinner Plain
Pure High Country

visitdinnerplain.com.au





ADVENTURE
GUIDES AUSTRALIA



Family-friendly adventures at Beechworth!



- **Abseiling** • **Rock Climbing** • **Gold Panning**
- **Aboriginal Art Site Tours** • **Guided Bush Walks**
- **Goldfileds & Bushranger History Tours**

Adventure Guides Australia(AGA) is an outdoor experience company owned by long-time local David Chitty. AGA, as a Parks Victoria Licensed Tour Operator, has been offering amazing outdoor experiences at Beechworth, on Mount Buffalo and throughout Northeast Victoria since 1985. We offer regular advertised tours on selected weekends and school holidays, and adventures and activities by arrangement at other times of the year.

For Bookings and Information Contact David Chitty
P:0419 280 614
E: bookings@adventureguidesaustralia.com
www.adventureguidesaustralia.com.au



Scenic tours...wherever you wish to go



HI LIFE HELICOPTERS

EXPLORE THE NORTH EAST
AND ALPINE AREAS
SCENIC FLIGHTS - TOURS -
PHOTOGRAPHY - CROP PROTECTION
SPECIAL OCCASIONS - CHARTER -
COMMUNITY EVENTS

Get a birds eye view over the local town
and beautiful Bright region.
Fly over and around local landmarks
and wineries.

All flights take a total of 4 passengers
and require a minimum of 3 passengers.
Hi Life prefers 24 hours notice for all flights. All
flights subject to availability and weather
conditions.



Porepunkah Airport,
Buckland Valley VIC
Brian 0418 573 764
Adam 0487 120 100
www.hilifehelicopters.com.au
info@hilifehelicopters.com.au



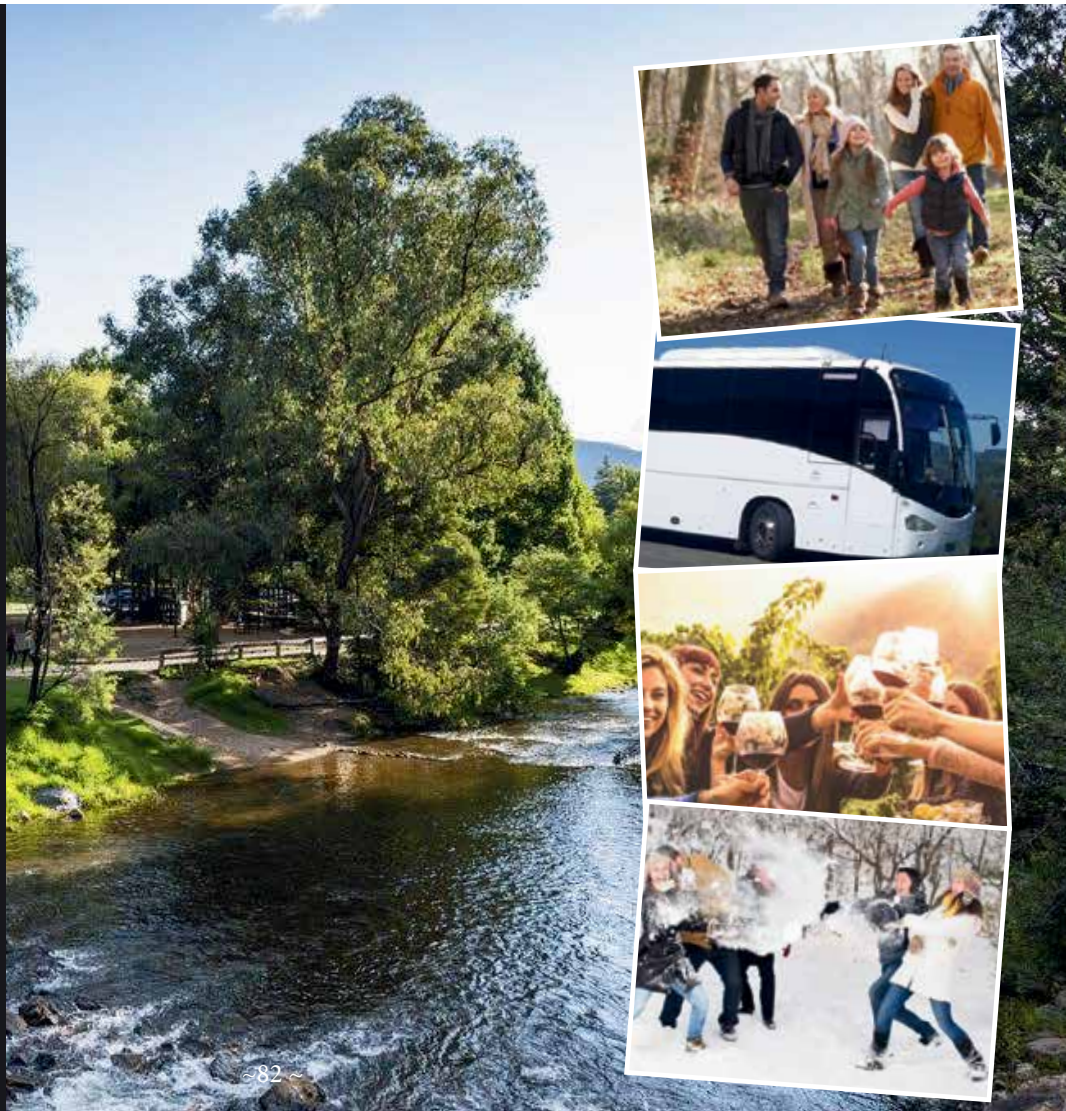
Bright & District Leisure Tours

Based in Bright, Victoria, in the Northeast Alpine High Country area we offer high quality bus tours around Bright and its surrounding towns and districts for pub and winery tours, weddings, sports/club outings, over snow and ski transfers, school trips, hiking and cycling trails, family holidays, airport transfers, sightseeing tours, corporate events, private tours, bespoke tours and any other group travel or transportation you require!

We are the leading bus tour and charter company in Bright. If you want to go somewhere - Bright & District Leisure Tours will take you there! Our experienced bus charter team can assist with moving your group throughout Bright and the surrounding districts of Victoria, New South Wales and the High Country. We have a range of buses, from 13 to 57 seaters, available for charter.

0458 922 518

eaglerange@bigpond.com





ALL TERRAIN CYCLES

MANSFIELD • MT BULLER • BRIGHT



CYCLE ADVENTURES FOR EVERYONE!

Bike Hire | Tours | Sales | Repairs
MTB Coaching | Kids Bike Programs
Schools and Corporate Groups



105 GAVAN STREET, BRIGHT | 03 5750 1372

ALLTERRAINCYCLES.COM.AU

YOUR ONE STOP, FRIENDLY,
FAMILY-OWNED SNOWSPORTS SHOP



Refer to
this advert for
10% DISCOUNT
on all hire
equipment.



12 GREAT REASONS YOU SHOULD CHOOSE KVS

- On the way to Falls Creek in Mt Beauty
- Next door to Falls Creek Coach Services bus terminal
- Friendly personalized service and competitive prices
- Huge range of brands and snowsports retail products
- Excellent range of brand new Rental Skis and Snowboards
- Volkl, Black Crows, DPS and Rossignol Demo Skis
- Nitro, Bataleon and Capita Demo Snowboards
- Resort Entry passes available in store
- All chains are quality Konig Diamond Pattern
- Chain fitting instructions and demonstrations provided
- Professional Ski/Snowboard Tuning and Waxing
- Montana Crystal Glide/Edge and Waxing on all equipment

BONUS OFFER!
*Half price snow chain rental.
*conditions apply

KVS KIEWA VALLEY SNOWSPORTS
SKIS - SNOWBOARDS - CHAINS



03 5754 4000
Open 7am to 7pm - 7 days a week
during ski season

239-241 Kiewa Valley Highway
Tawonga South, Victoria 3698

Email: info@kvss.com.au
www.kiewavalleysnowsports.com.au

HIRE • PLAY • PROGRESS





**MOTORCYCLE
TOURS**

**JEEP
4WD TOURS**

**MOUNTAINBIKE
TOURS**

**HIKING & WINE
TOURS**

**SKI
SHUTTLES**

**GLOBAL
ADVENTURES**

STEVE ROBERTSON
PH: 0401 010 782
INFO@3741ADVENTURES.COM.AU



- 1HR, 3HRS & ALL DAY OPTIONS
- GUIDED & SUPPORTED OPTIONS
- ALL MOTO GEAR FOR HIRE
- PRIVATE SKI SHUTTLES
- INTERNATIONAL TOURS

3741ADVENTURES.COM.AU



Scan for tips from the people who live and play in Bright & Surrounds

Sharing the river with platypus they need our help to survive

Platypus live here

With luck you might see a platypus but the survival of these very special animals is under threat. The platypus is an egg laying mammal. So too is the short beaked echidna which also lives around here.

Did you know?

Platypus sleep and raise young in burrows under shady riverbanks, but they always feed in the water. They can stay underwater for 1-2 minutes before needing to take a breath. But be quiet and still because if frightened they may hide for longer.

A Plat or a Rat?

Platypus can sometimes be mistaken for a rakali (native water-rat). The distinctive white tip at the end of the rakali's tail is a good way to tell one animal from the other.



Rubbish

Platypus become entangled in all sorts of rubbish, especially plastic rings such as 6-pack holders.

Before SWIMMING: always remove hair ties and jewellery!

Fishing

STOP fishing if you see a platypus: they get snagged in lines and on hooks.

Never leave lines unattended!

Retrieve lines and hooks.

Platypus drown in nets and traps: they are illegal.

Dogs


Keep your dog or cat UNDER CONTROL or on a leash at all times: they can kill platypus.

Riverbanks are platypus habitat.

Avoid camping or driving along the river edge.

More information?

Scan the QR code for Australian Platypus Conservancy



Kate's Cottage & Ned Kelly Museum

WANTED



Step out through the back door to a genuine replica of the Kelly's homestead that was originally situated in Greta West. This homestead is put together as a museum in it's own right with some items originally belonging to the Kelly's. You can read the whole history of the Kelly story...and decide for yourself whether they were bad or good.

Make sure you visit the cheeky talking cockatoos Howard (86yo) and Dorothy (39yo) who will sing, talk and dance for you. Keep your fingers away though... they might bite.



KATES COTTAGE Ned Kelly Gifts & Souvenir Shop, the NED KELLY MUSEUM display and the replica of the KELLY HOMESTEAD (part of Kate's Cottage, Gifts and Souvenir shop and Museum display)

are located at:

35 Gladstone Street, GLENROWAN Victoria, 3675

~ 87~





ADVENTURE
GUIDES AUSTRALIA

Ordinary People Achieving Extraordinary Things!



• **Abseiling** • **Caving** • **Rock Climbing** • **Kayaking** • **Bushwalking** • **Crevassing** • **Gold Panning**

Offering Spectacular adventures in Bright, Mount Buffalo, Beechworth, Myrtleford and surrounds.
Parks Victoria Licensed Tour Operator Since 1985

www.adventureguidesaustralia.com.au | m. 0419 280 614 | bookings@adventureguidesaustralia.com



MOUNT BUFFALO
SKI SCHOOL
A division of Adventure Guides Australia

Mount Buffalo's winter wonderland is a family-friendly snow destination!



• **Cross-country Ski Lessons** • **Cross-country Ski Tours** • **Snowshoe Tours**

Family Friendly | No Lift Fee | No Parking Fee | Heated Day Shelter and Cafe
Multiple Toboggan Slopes | Beautiful Mountain Scenery | Groomed Cross-country trails

www.mountbuffaloskischool.com.au | m. 0419 280 614 | bookings@adventureguidesaustralia.com

Visiting North East Victoria?

Consider a JimJam joyride

Only 7kms from Beechworth, in the rolling hills of Stanley, you'll find JimJam HQ

Here on our farm we make all the JimJam products you love to eat



Our farm gate is open to visitors daily

Come for the food. Stay for a coffee.

Talk to our people, taste our latest flavours and grab some JimJam to go.



Join us for a jam session soon



At JimJam we keep it simple. Best ingredients, big flavours, that's our jam.



JimJam ☺ happy bottled

JimJam Foods 87 Creek Rd Stanley Victoria — Farm gate open daily. Visit jimjam.com.au to explore more yum!



Howitt Park, Bright 9am-1pm

Third Saturday of the month

Original. Homemade. Homegrown



www.brightmarkets.com.au

SERVICE COURSE

BICYCLE STUDIO



3 Nicholson St, Porepukah
0419 149 323



SALES - HIRE - SERVICE



RED STAG DEER & EMU FARM

FULLY LICENSED RESTAURANT & TOURISM COMPLEX

* FREE ADMISSION *

* OPEN DAILY BETWEEN 10am & 4pm *

* DEER & EMU FARM ENTERTAINMENT *

* HAND FEED THE ANIMALS *

* BUS TOUR TALKS & DEVONSHIRE TEAS *

* LUXURIOUS DINING *

* EXTENSIVE LUNCHTIME MENU *

* FANTASTIC PHOTO OPPORTUNITIES *

* GIFT & SOUVENIR SHOP *

* HAND MADE PHOTO CARDS *

* DEER FARM FRESH MEATS & SAUSAGES *

* THERAPEUTIC DEER & EMU PRODUCTS *

****** LATEST ATTRACTIONS ******

~ MINI GOLF ~

~ HIGH COUNTRY CATTLEMAN'S HUT ~



Whatever the season, whatever the reason, come to the Red Stag Deer & Emu Farm to enjoy the plentiful culinary delights, hospitality & luxury that are here on offer - "simply majestic ..."



**324 HUGHES LA.
EUROBIN**

(off Wobonga Lane)

Ph. (03) 5756 2365



www.redstag.com.au





SUN CINEMA

Sun Cinema Bright is an Independent Cinema showing New Releases, Art House Titles, Australian Independent Productions and Foreign Movies.



Licensed venue
with relaxed
lounge seating.

Also available for
private bookings.



www.sunbright.com.au

119 Great Alpine Rd, Bright • 03 5747 3500





HAPPY VALLEY HUB

- ❄️ Ski & SB Hire
- ❄️ Chain Hire
- ❄️ Toboggan Hire
- ❄️ Ski & SB Retail
- ❄️ Boot Fitting
- ❄️ Mt Bike and E-Bike Hire

Warm yourself by the fire while getting fitted (off mountain) and choose to take your gear or pick it from our Falls Creek or Hotham Store



5023 Great Alpine Rd, Ovens
03 5751 1845

www.happyvalleyhub.com.au
info@happyvalleyhub.com.au



Bright Outdoor Centre

CAMPING | FISHING | HIKING | CLOTHES | RIVER FUN

For friendly advice, service and all you need to enjoy life in the outdoors.
9 Ireland St, Bright



NIGHTINGALE BROS ALPINE PRODUCE STORE

- Fresh Apples and Produce • Hot Coffee •
- Apple pies, Jams and Relishes • Gifts and Homewares •
- Nightingale Bros Alpine Cider and Juice •



OPEN 7 DAYS 10AM – 5PM

708 Morses Creek Road, Wandiligong 03 5755 1318

www.nightingalebros.com.au

 [nightingales_alpine_produce](https://www.instagram.com/nightingales_alpine_produce)  Nightingale's Alpine Produce





Chiltern

explorechiltern.com.au



hillsborough quality nuts

farm shop & cafe



seasonal produce



friendly cafe



handmade treats + gifts



biodiverse family farm

105 mt stanley rd stanley
 thurs & fri 10am - 5pm | sat & sun 9am - 5pm
 0402 909 806



18 HOLE MINI GOLF COURSE IN THE HEART OF BRIGHT

You'll be hitting a hole in one when you treat the family to a round at Bright Mini Golf. Upmarket and challenging in the best way, our beautifully laid out 18 hole course is a mirrored version of the current Bright Golf Course including undulations.

Complete with practice putting green and golf shop supplying colourful putters and golf balls, you'll be teeing off in style. Fun for kids, teens and adults and is just 500m to the centre of town.

also available for birthday parties and private functions

**OPEN 7 DAYS A WEEK
FROM 9AM DAILY
GLOW GOLF
7PM TIL 9PM**

**BOOKINGS AND ENQUIRIES
PLEASE PHONE 03 5750 1433
1-5 DELANY AVENUE, BRIGHT**

DISCOVER ONE OF AUSTRALIA'S *Oldest* BREWERIES

ESTD 1865



Plan a day with our Historic Brewery Tour or exclusive Cocktail Class, drop in for a drink in our Beer Garden or Speakeasy Bar.

Enjoy a leisurely lunch featuring great local produce and explore our range with free tastings of beer, gin, liqueurs, traditional cordial and classic sodas.

Truly something for everyone!

BILLSON'S BREWERY
BEECHWORTH, VICTORIA



TAP ROOM



BEER GARDEN

TASTING ROOM



SPEAKEASY BAR



HISTORIC BREWERY TOUR



COCKTAIL CLASS

SODA BAR



SHOP



BILLSON'S BREWERY
29 Last Street, Beechworth
12pm-5pm seven days

BILLSON'S SODA BAR
37 Camp Street, Beechworth
12pm-10pm Thursday-Monday

03 5728 1304 | billsons.com.au

BILLSON'S
ESTD BEECHWORTH 1865

Schmidt's

YACKANDANDAH • VICTORIA
OSBORNES FLAT ROAD, ALLANS FLAT

Open 7 days, 10am - 4pm.

Ph 02 6027 1454

For Something Different

STRAWBERRY WINERY



Allans Flat Tourist Drive No 6

Welcome to Schmidt's Strawberry Winery set amidst acres of lush strawberry fields, this winery is unique in Australia. Using traditional family method, our international award winning fruit wine has won many friends from all over the country. Available in Dry, Semi Sweet or Sweet. Join us in a taste of the S.L. the Strawberry Liqueur.

BRIGHT VICTORIA SINCE 2016

REED & CO. DISTILLERY

TASTING FLIGHTS | COCKTAIL BAR | DISTILLERY DOOR

LOCATED IN THE HEART OF BRIGHT, REED & CO DISTILLERY PRODUCE AWARD WINNING CRAFT SPIRITS, INCLUDING; GIN, LIQUEURS, AUSTRALIAN SHOCHU & KOJI BASED SPIRITS.



VISIT THE DISTILLERY TO ENJOY SPIRIT TASTINGS, COCKTAILS & FOOD.





KING RIVER ESTATE

KING VALLEY

*Let the grapes
do the talking*

Using a traditional yet innovative approach to wine making, the King River Estate's philosophy is based on some of the "old world" techniques where wines are made naturally and the grapes are left to interact with wild yeasts, allowing for a natural fermentation to take place resulting in far more complex, soft & textural wines.



**Open Friday to Sunday 11-5pm and by appointment
Monday with additional trading days during school
holidays. Check the website for updates.**



We welcome you to enjoy a wine tasting or a glass of your favourite sparkling, white, rosé or red wine from our King River Estate or Flying Duck range. in our shaded garden with a backdrop of the mountains and the vines.

Light food is available and served from 11.30am to 4.30pm, including dumplings, arancini and grazing platters.



Wangaratta-Whitefield Road, Edi, 3678

0436 646 787

contact@kingriverestate.com.au

~ 100 ~



Down the peppercorn tree lined drive, you'll find our century old cellar door, home to Baileys of Glenrowan. Meander past the heritage buildings & one hectare block of Shiraz planted in 1904. Many of the wines are produced as they were over the last century with natural yeast, open fermentation, basket pressed and matured in the finest oak.



OPEN

10:00am-4:30pm | 7 days a week

CLOSED Christmas Day - Boxing Day - Good Friday
FOR BOOKINGS 03 5766 1600



The Bundarra Organic Kitchen operates around our much loved wood fired pizza oven and organic kitchen garden. Enjoy fresh organic pizza with seasonal organic toppings and other rustic fare, freshly made to order and naturally accompanied by a glass or two of superb Baileys wine.



OPEN

12:00am-3:00pm Friday, Saturday & Sunday

BOOKINGS ESSENTIAL 03 5766 1600



779 TAMINICK GAP RD, GLENROWAN VIC, 3675



GLENBOSCH

WINE ESTATE

BEECHWORTH WINE REGION

Relax and Enjoy
WINE. GIN. FOOD
www.glenbosch.com.au



www.hurdlecreekstill.com.au

216 Whorouly Bobinawarrah Rd, Milawa

6km past Brown Brothers Winery

Phone: 0411 156 773



HURDLE CREEK STILL

Craft Gin Distillery



Please check our website for opening hours
www.hurdlecreekstill.com.au



Crank Handle

BREWERY

Locally owned and operated craft brewery in Mt Beauty.

We serve a range of traditional, brewed onsite hand crafted beers and delicious food created from locally sourced ingredients where possible.



Thursday 3-8pm
Friday 12-9pm
Sat 12-9pm

Sunday 12- 8pm

Check Google for updates
(03) 5754 4443

www.crankhandlebrewery.com.au
[@crankhandlebrwery](https://www.instagram.com/crankhandlebrwery)





WOOD PARK WINES

Hidden in the hills of Bobinawarra is a beautiful little vineyard producing award winning small batch wines for your pleasure. Instead of taking you off the beaten track we have brought the wine to you at the Milawa Cheese Factory Complex.

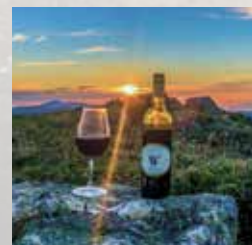


Free Wine Tasting Open 7 days 10-5
No bookings required



WOOD PARK WINES

Milawa Cheese Factory Complex 17 Milawa-Bobinawarra Road Milawa Vic 3678
03 5727 3778 cellardoor@woodparkwines.com.au woodparkwines.com.au



MOUNTAIN MONK BREWERS



ABOUT US

Located in Victoria's High Country, Mountain Monk Brewers is a family-owned business that offers a combination of artisanal craft beer, delectable cuisine featuring local produce, and rich local traditions.

The venue is conveniently located in the center of Mount Beauty and offers a comfortable large beer-garden for young and old to enjoy.

WHAT'S ON?

- Ten Craft Beers on Tap
- Community Raffles every Friday from 5.30pm
- Happy Hour every Friday from 4.00pm to 6.00pm
- Live Music Every Saturday

1 LAKESIDE AVENUE, MOUNT BEAUTY VIC 3699
(03) 5754 4985
WWW.MOUNTAINMONKBREWERS.COM.AU

~ 104 ~



Eaglerange Estate

Opening hours:

10am to 5pm Wed-Sun
Closed Christmas day &
Good Friday

VINE TO WINE:

Bus groups are welcome by prior arrangement. Please contact the winery for more details and bookings.

Check out our NEW website:

www.eaglerangeestate.com.au

Eaglerange Estate is situated in northeast Victoria, along the hills of the beautiful Happy Valley. This cool climate winery is part of the Alpine Valleys wine region and has derived its name from the watchful eagles that have made the surrounding area their home for many decades.

WHERE IT ALL BEGAN //

Eaglerange has been in the Ivone family for more than three generations, the property was first used for cattle, hay and chestnut trees. Eventually these activities made way for the vineyard to be established. The first vines at Eaglerange Estate were planted in the spring of 1995. Frank and Tiziana, with the help of Frank's father, Luigi, and their daughters Natasha, Ashlee and Cassandra, planted each vine lovingly by hand. The Cabernet Sauvignon was the first variety to go in the ground, followed by the Merlot. Over the years other varieties such as Tempranillo, Riesling, White Frontignac and Saporavi have been added to the vineyard.

Part of the family heritage that stems back to past generations is the making of homemade salami. This artisan craft has been lovingly handed down to the current generation, which includes the ever-inquisitive grandchildren.

Our motto, "*Set a Stout Heart to a Steep Hill*", has been part of the Ivone family from the time of the Great Depression and is still very much part of our everyday lives. In essence, when faced with adversity, be strong of heart and will.

The future of Eaglerange Estate lies within the talents of the next generation.

Our children and their families carry with them the legacy of past generations into the future.



THE WELCOME PARTY

These gently, playable, loving dogs will meet and greet you at the door. Don't be alarmed, they are professional winery dogs.



Contact Frank Ivone • ph: 03 5752 2518 • fax: 03 5752 2548 • eaglerange@bigpond.com
• 228 Happy Valley Road, Ovens Victoria 3738 • eaglerangeestate.com.au



Ned Kelly's

Last Stand

This attraction is not a movie theatre or sound and light show!

Through the brilliance of animatronics and live special effects you will be taken back to 1880 to be a part of the fateful moments before and during the Glenrowan Siege.



**Step on in and keep up
with the Kelly Gang!
Seats 40 people**

Venture with the police from Melbourne to Glenrowan; be held captives by the Kellys in the Ann Jones Inn; out to the gunfight through the burning inn and witness Ned's final moments in the Old Melbourne Gaol.

“Ah well, such is life”



41 Gladstone St, Glenrowan, Vic, 3675 (03) 5766 2367
www.kellylandglenrowan.com.au e: admin@kellylandglenrowan.com

Follow us on Facebook: [@kellylandglenrowan](https://www.facebook.com/kellylandglenrowan)

~ 106~



presented exclusively by

Kellyland Glenrowan



Tickets include admission into our museum with many original Kelly and Victorian Police artefacts, antiques and artworks on display.

Our Souvenir shop is also well stocked with many handmade Ned Kelly items, books, gifts and much more. Show runs 40 minutes every half hour (separate rooms) between 10am to 4pm Mon, Thurs, Fri, Sat, Sun (open every day over Victorian school holidays).



MOUNTAIN FRESH TROUT AND SALMON FARM

FISHING FUN FOR THE WHOLE FAMILY



**- FREE ENTRY - ROD + BAIT SUPPLIED
- FISH CLEANED - RETAIL SHOP**

HARRIETVILLE, VICTORIA. 18KM FROM BRIGHT.
THUR-MON 10AM-4PM
7 DAYS 10AM-4PM (VIC PUBLIC AND SCHOOL HOLIDAYS)

P: (03) 5759-2558

E: MOUNTAINFRESH@BIGPOND.COM

SHOP ONLINE AT

W: MOUNTAINFRESHTROUTHARRIETVILLE.COM

